



Option Guide

Option Guide

01 SPECIFIC LAYOUT

02 EQUIPMENT & PACKS

03 IN & OUT UPHOLSTERY

04 MOTORIZATION

05 SAILS & RIGGING

06 AFT, FORWARD COCKPIT & FLYBRIDGE

07 DECK EQUIPMENT

08 ONBOARD ENERGY & AC

09 WATER CIRCUIT

10 INTERIOR EQUIPMENT

11 HIFI, VIDEO & ELECTRONICS

12 MOORING & ANCHORING



01 Specific Layout

Starboard bow layout: heads wc and single bed (IC-0010-004)

Port middle cabin: utility room with head (IC-0028-005)

Port middle cabin: 2 bunk beds with head (IC-0028-004)

STARBOARD BOW LAYOUT: HEADS WC AND SINGLE BED

PRICE LIST REFERENCE: IC-0010-004

Picture soon to come

This option includes:

- Single berth,
- Shower,
- Electrical toilet

Replaces standard storage area.

PORT MIDDLE CABIN: UTILITY ROOM WITH HEAD

PRICE LIST REFERENCE: IC-0028-005



Available in 3-cabin version only.

This option includes:

- Utility room: upgrades and extra storage spaces,
- Dedicated area for electrical appliances,
- Private head: shower and separated toilet.

Replaces standard storage area.

The head comes in replacement of a standard wardrobe.

In this configuration, a dedicated space for the optional washer-dryer is provided.

This option is not compatible with the IC-0028-004 "PORT MIDDLE CABIN: 2 BUNK BEDS WITH HEAD" option.

PORT MIDDLE CABIN: 2 BUNK BEDS WITH HEAD

PRICE LIST REFERENCE: IC-0028-004



Available in 3-cabin version only.

This option includes:

- Bunk beds,
- Private head: shower and separated toilet.

Replaces standard storage area.

The head comes in replacement of a standard wardrobe.

This option is not compatible with the IC-0028-005 "PORT MIDDLE CABIN: UTILITY ROOM WITH HEAD" option.



02

Equipment & Packs

READY TO SAIL EQUIPMENT (VA-0001-004)

Batteries charger

Electric circuit

220V plugs in cabins and salon and USB-C plugs

4 additional service batteries 140Amp + battery controller

Monitoring display (Navicolor)

Electrical manoeuvre winch

S/steel dinghy hoist system & manual winch

Pulpits with wooden seats

Indirect lighting in cabins and salon

Deck courtesy lights in cockpit, transoms and flybridge

Fusion APOLLO MS-RA 670 + 8 loudspeakers in salon, cockpit and fly

Water purifier

Additional 320L water tank

Freshwater dock inlet

Deck wash pump sea water / fresh water

Electric toilets Quiet-Flush

Lateral portholes in salon

Upper storage in salon

Cockpit shower

Outside upholstery (60mm thick) PVC (helm station , aft and fwd cockpit and flybridge)

Inside upholstery (100mm thick) PVC



02

Equipment & Packs

READY TO SAIL EQUIPMENT (VA-0001-004)

RAYMARINE NAVIGATION PACK

Multifunction i70s display

P70 autopilot

Speed / Depth / Temp transducers

Wind Transducer

RAY63 VHF

AIS700

Axiom Pro 16" display

SERENITY PACK (VA-0007-001)

Stainless steel protection around galley

Aluminium lip for companionway stairs

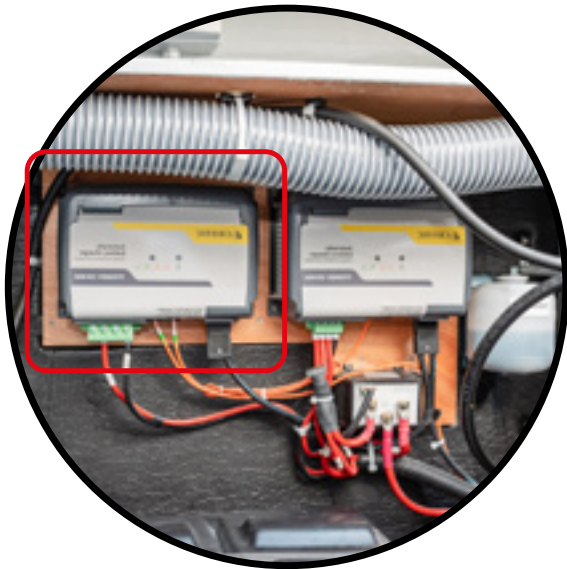
Dark blue mattress

Atmosphere Pack: Panarea (VA-0003-005)

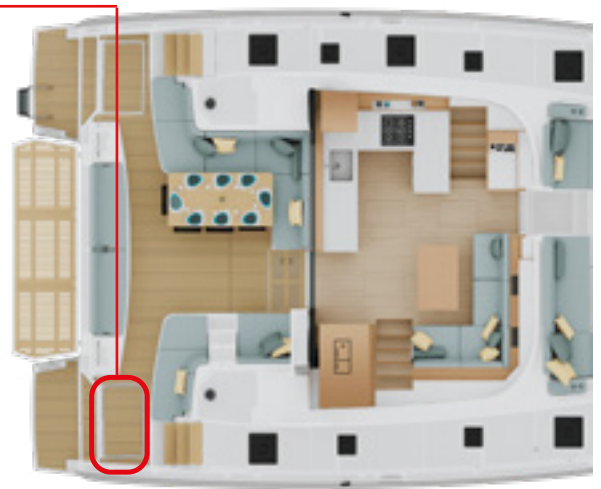
Atmosphere Pack: Sorrento (VA-0003-004)

READY TO SAIL EQUIPMENT

Batteries charger



70A charger



Located in the starboard engine compartment

70A battery charger charges service batteries and engine.

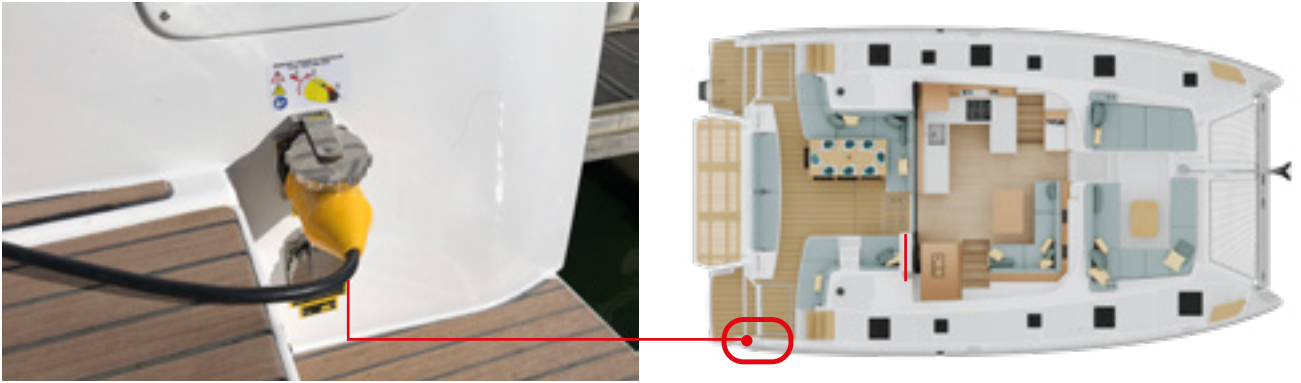
Brand: Cristec

READY TO SAIL EQUIPMENT

Electrical Circuit

Includes wiring harness, protections + shore power + power sockets

1 x 32A shore power at port side (220V / 110V configuration)



220V and USB-C outlets

Location onboard details soon to come

READY TO SAIL EQUIPMENT

4 additional service batteries 140A + battery controller

	STD	Ready to Sail	Total
Service battery bank	2 x 140A [AGM]	4 x 140A [AGM]	6 x 140A [AGM]



Battery monitoring:

Power supply, Charge level, lifespan

A dedicated extra sensor allow to monitor the batteries lifespan and alert for replacing

All information are available on touch screen at chart table

LOCATION ON BOARD



Service batteries

READY TO SAIL EQUIPMENT

Monitoring display (Navicolor)



Screen Size upgrade: 3.5" Touch Screen (replaces the STD 2.4")

Monitoring upgrade:

- Main battery banks: voltage & power INPUT / OUTPUT
- Start batteries (port & starboard): voltage & power INPUT / OUTPUT
- Charger: voltage INPUT & total power consumption
- Charger (Generator option)
- Grey water tank levels

Standard monitoring includes:

- Fuel tank levels
- Fresh water tank levels

Lighting:

- ON/OFF for each cabin (Reading light not included)
- ON/OFF for salon (Chart table reading light not included)
- ON/OFF for cockpit

Standard monitoring includes:

- Lighting: Global ON/OFF (Reading lights and technical compartment lights not included)

A total ON/OFF control including head ceiling lights, reading lights, technical compartment lights. Control switch at main DC panel at the chart table.

READY TO SAIL EQUIPMENT

Electrical manoeuvre winch



Brand & Reference:

- Harken
- 50.2 STEA

Replaces standard manual manoeuvre winch.

All manual winches can be upgraded to electric winches as an option : AA-0001-003
"WINCHES AND MAINSAIL TRAVELLER: ELECTRIC

READY TO SAIL EQUIPMENT

S/steel dinghy hoist system



Picture onboard Lagoon 43 - Non contractual

Max length: 3,60 m | 11'10"

Max load: 200 kg | 441 lbs

Winch: 35.2 STA - Harken

Suggested dinghy:
- CL360 Highfield
- 20HP engine

READY TO SAIL EQUIPMENT

Pulpits with wooden seats



Stainless steel pulpits with wooden seats and front lines.

Replace standard: Side life lines ending with s/steel stanchion.

READY TO SAIL EQUIPMENT

Indirect lighting in cabins and salon



Indirect lighting in saloon ceiling

Salon



Indirect lighting

Indirect lighting

Owner's cabin



Aft cabin

READY TO SAIL EQUIPMENT

Deck courtesy lights in cockpit, transoms and flybridge

Brand & Reference:

Hella Marine - Blue LED Easy Fit Step Lamp

Power supply: 12V

Location onboard details soon to come



READY TO SAIL EQUIPMENT

Fusion RA670 + loudspeakers in salon, cockpit and flybridge



Fusion Apollo RA670



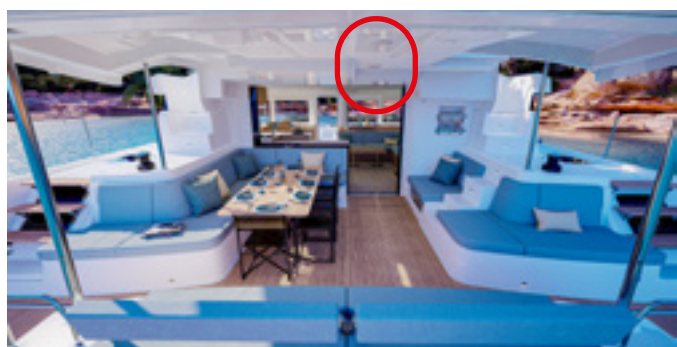
Loudspeakers in cockpit and Flybridge
FUSION XS



Loudspeakers in salon
Fusion SM 6.5
Ref supplier: 010-02263-10

Sources:

- RADIO / Bluetooth / USB / AUX



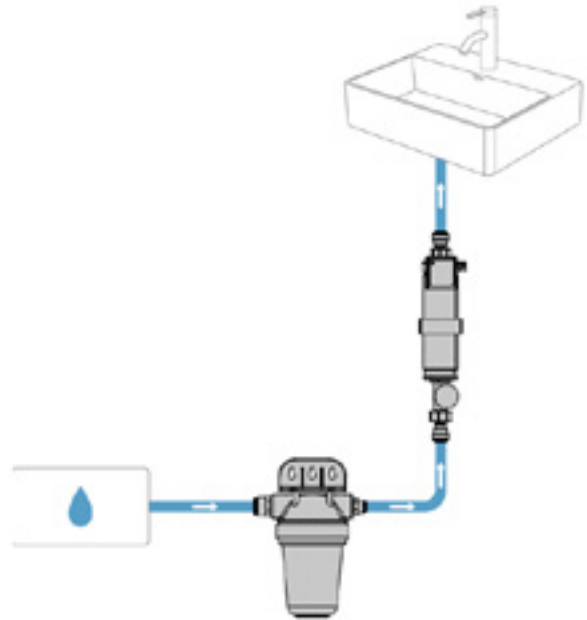
READY TO SAIL EQUIPMENT

Water purifier



Non contractual picture
Located under the galley sink

TYPICAL INSTALLATION



Brand: WATERSPRINT™ SOLO NAUTIC II

Works only with cold water.

The WATERSPRINT™ SOLO NAUTIC II solution disinfects water using activated carbon pre-filtration and UVC LED Disinfection System for microbially safe water without chemicals.

It meets the following needs and characteristics:

- Robust, Reliable, and Compact Design,
- Efficient Illumination and Instant Start,
- Low Power Consumption,
- Mercury-Free UVC LEDs,
- Long Lifespan and Easy Maintenance,
- Easy Integration or Retrofit.

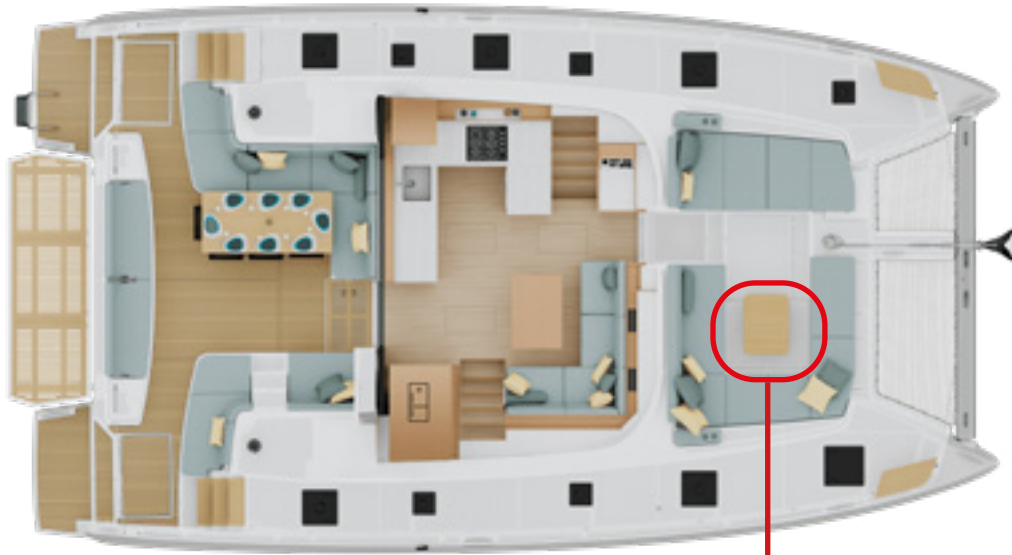
The system only works when there is a flow of water - instantaneous and doesn't alter the taste or characteristics of the water.

This water purifier responds to the global problem of access to water, saves a large number of plastic bottles and saves space on board.

The technical instructions of assembly and maintenance book is available on the Lagoon pro website.

READY TO SAIL EQUIPMENT

Additional 320L fresh water tank



Standard: 380L | 100 US Gal



Optional: 320L | 85 US Gal

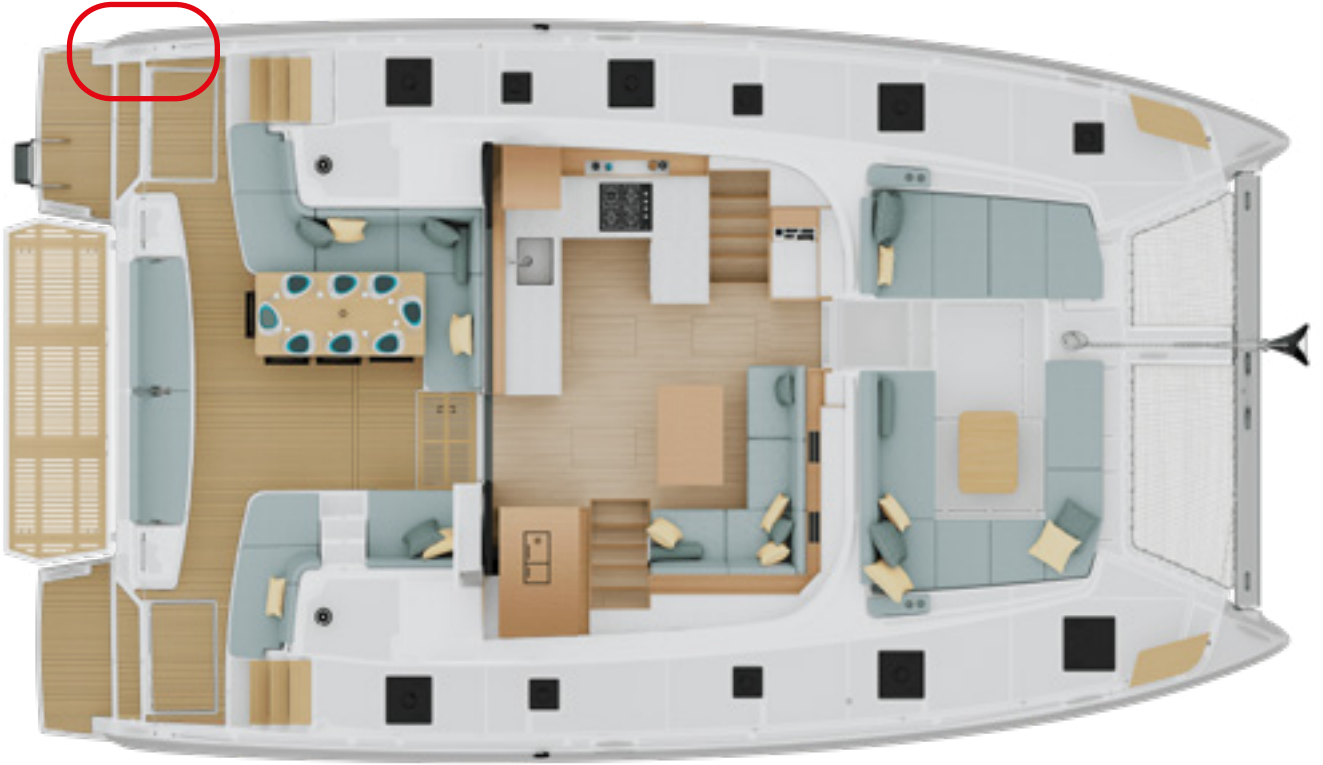
Comes in addition to the 380L | 100 US Gal standard fresh water

Same location in 3-cabin and 5-cabin versions.

Total: 700L | 185 US Gal

READY TO SAIL EQUIPMENT

Fresh water dock inlet

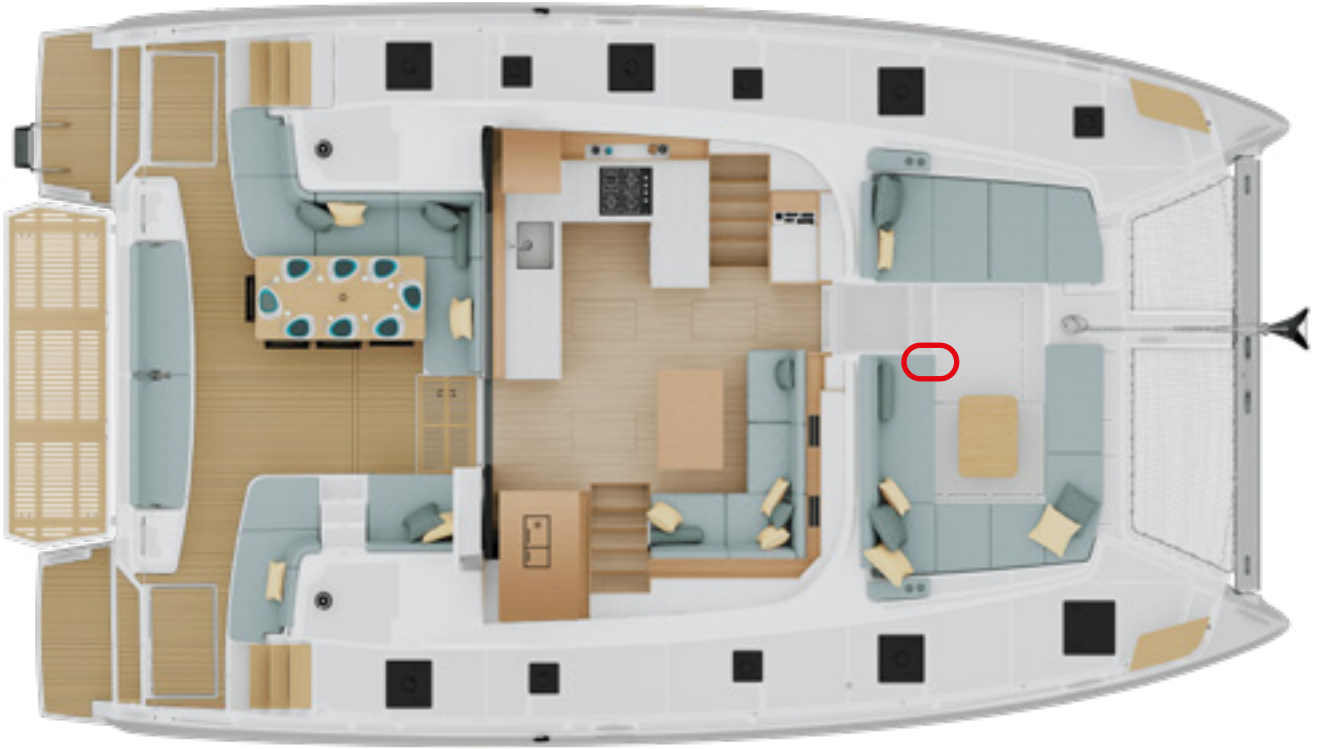


Non contractual picture

Located on port transom

READY TO SAIL EQUIPMENT

Deck wash pump sea water / fresh water



Located on the forward cockpit

READY TO SAIL EQUIPMENT

Electrical sea water toilets



Picture onboard Lagoon 43



Electrical sea water toilets

Same configuration in 3-cabin and 5-cabin versions.

READY TO SAIL EQUIPMENT

Lateral portholes in salon



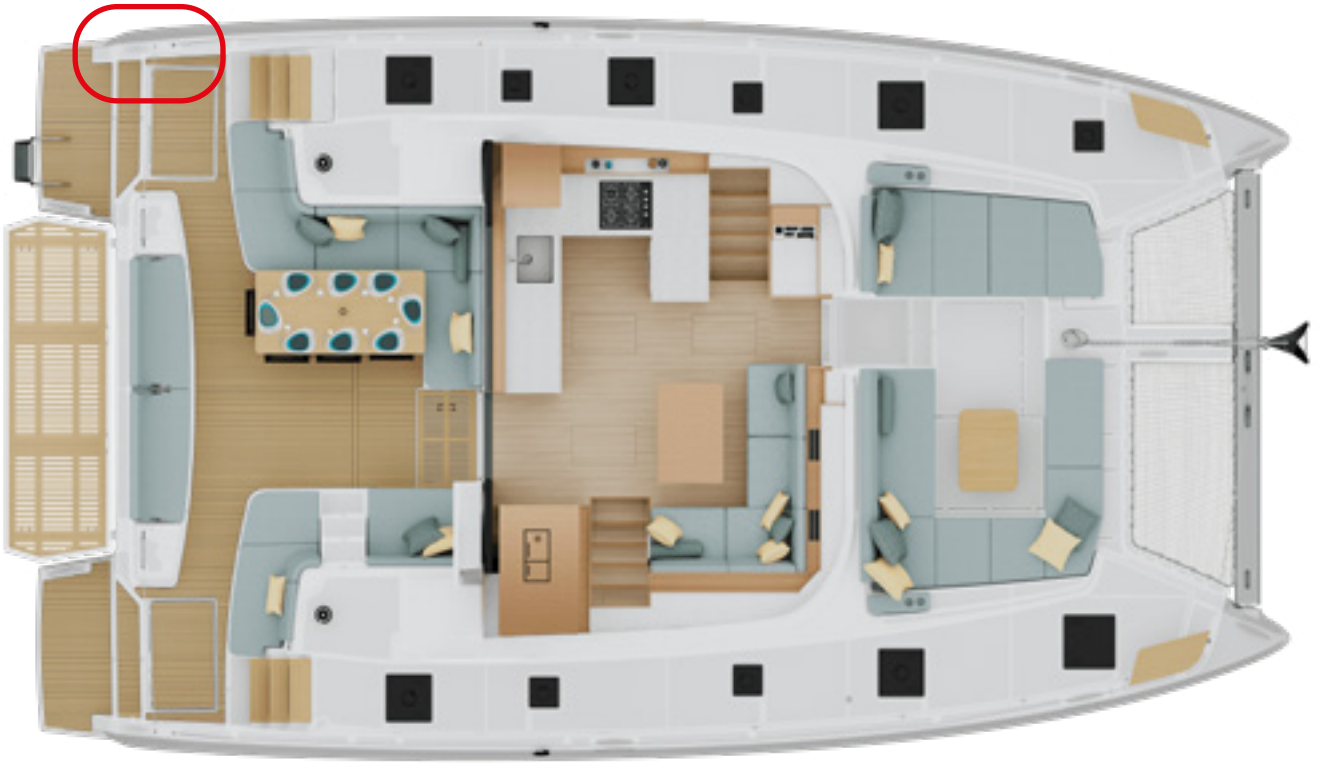
READY TO SAIL EQUIPMENT

Upper storages in salon



READY TO SAIL EQUIPMENT

Cockpit shower



Non contractual picture

Located on port transom

READY TO SAIL EQUIPMENT

RAYMARINE NAVIGATION PACK

Multifunction i70s display at helm station



Key Features:

- 4.1" super bright oversized LCD for maximum visibility
- All weather optically bonded display technology delivers brighter colors, sharper contrast, and a wide viewing angle
- New glass bridge industrial design compliments Raymarine eS and gS Series multifunction displays
- Simple user interface with sculpted rubber keypad for precise operation in all conditions
- Customizable data displays of depth, speed, wind and more
- SeaTalkng networking for seamless connectivity to Raymarine systems and NMEA2000 networks
- NMEA2000 connectivity for engine, environment fuel and navigation data
- Convenient AIS repeater mode allows you to visually track nearby AIS targets
- Combine the i70s with the ITC-5 instrument transducer convertor and connect to analog depth, speed, and wind sensors
- Network the i70s with Airmar DST800 transducers and the new in-hull P70s smart transducer

READY TO SAIL EQUIPMENT

RAYMARINE NAVIGATION PACK

p70s autopilot + ACU400 actuator + Gyro



Key Features:

- Supported autopilot modes: Auto; Standby; Pattern; Track; Wind Vane; Power Steer and Jog Steer
- SeaTalkng networking for seamless connectivity to Raymarine systems and NMEA2000 networks
- Advanced LED backlighting offers low power consumption and delivers vibrant colour and contrast
- Wide horizontal and vertical viewing angles ensure the display can be seen clearly from acute positions



READY TO SAIL EQUIPMENT

RAYMARINE NAVIGATION PACK

Speed/Depth/Temp Transducer

**DST810
Speed/
Depth/Temp
Transducer**



Wind transducer

**Wind transducer and
iTC5 interface box**



READY TO SAIL EQUIPMENT

RAYMARINE NAVIGATION PACK

RAY63 VHF



- Full-sized marine VHF with Digital Selective Calling
- Wired or wireless expansion with optional RayMic handset stations.
- Built-in GPS/GNSS receiver with connection point for optional external antenna
- NMEA2000 and NMEA0183 networking for integration with onboard systems

READY TO SAIL EQUIPMENT

RAYMARINE NAVIGATION PACK

Axiom Pro 16" display at helm station



Brand: Raymarine

- New generation Raymarine display with improved performance
- Optimized display with new LightHouse mapping for smooth, fast graphics refresh and enhanced brightness
- Powerful and ready to expand



A Large Blank map will automatically be delivered with the equipped boat: integrated to the Navigation Pack.

With the Large Blank map, the client will be able to download the map of their choice from a selection of 16 available Navionics maps that are compatible with Raymarine navigation displays. One year's subscription is included in the card.

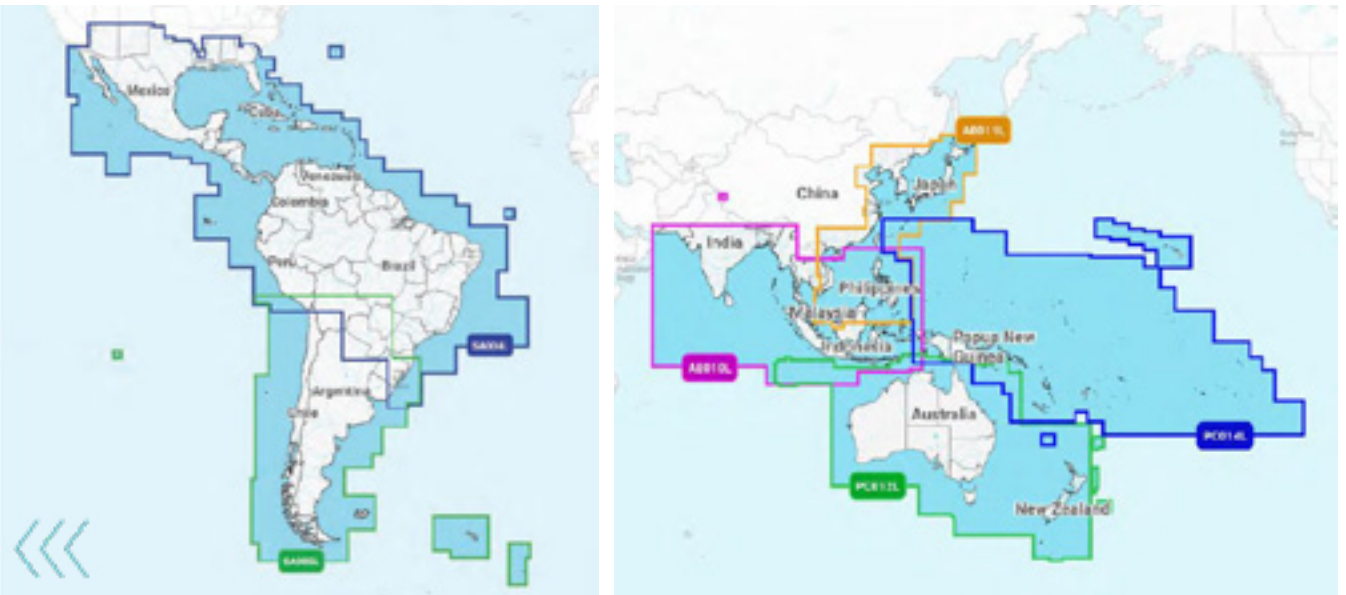
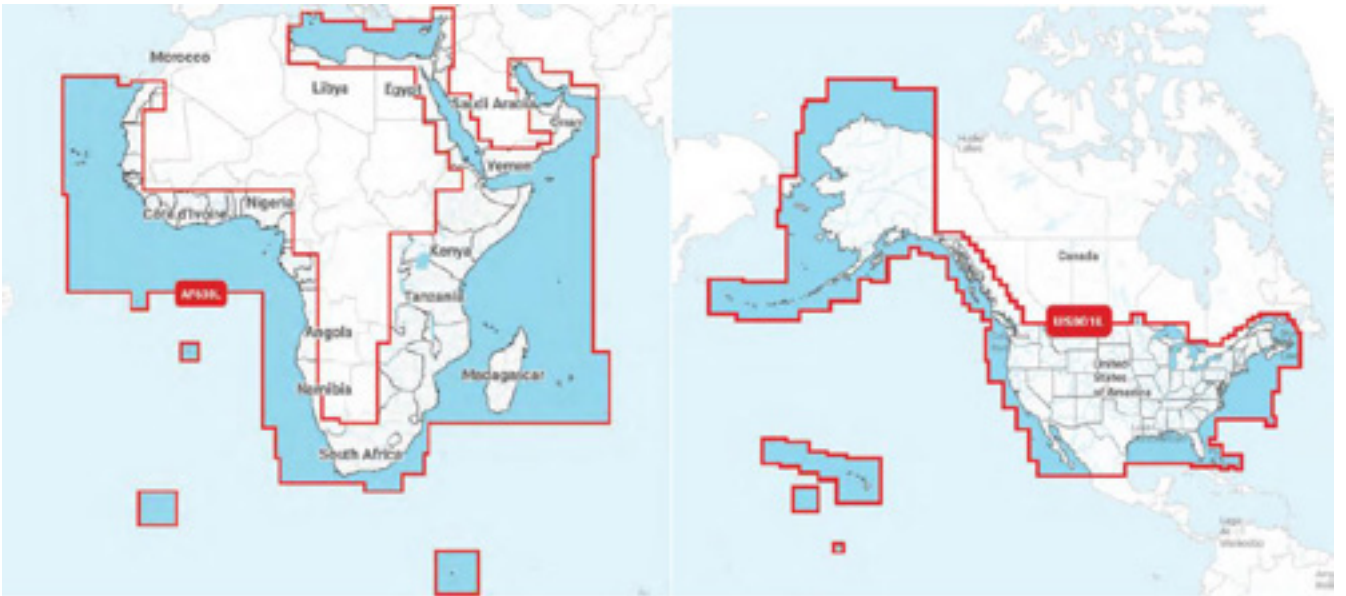
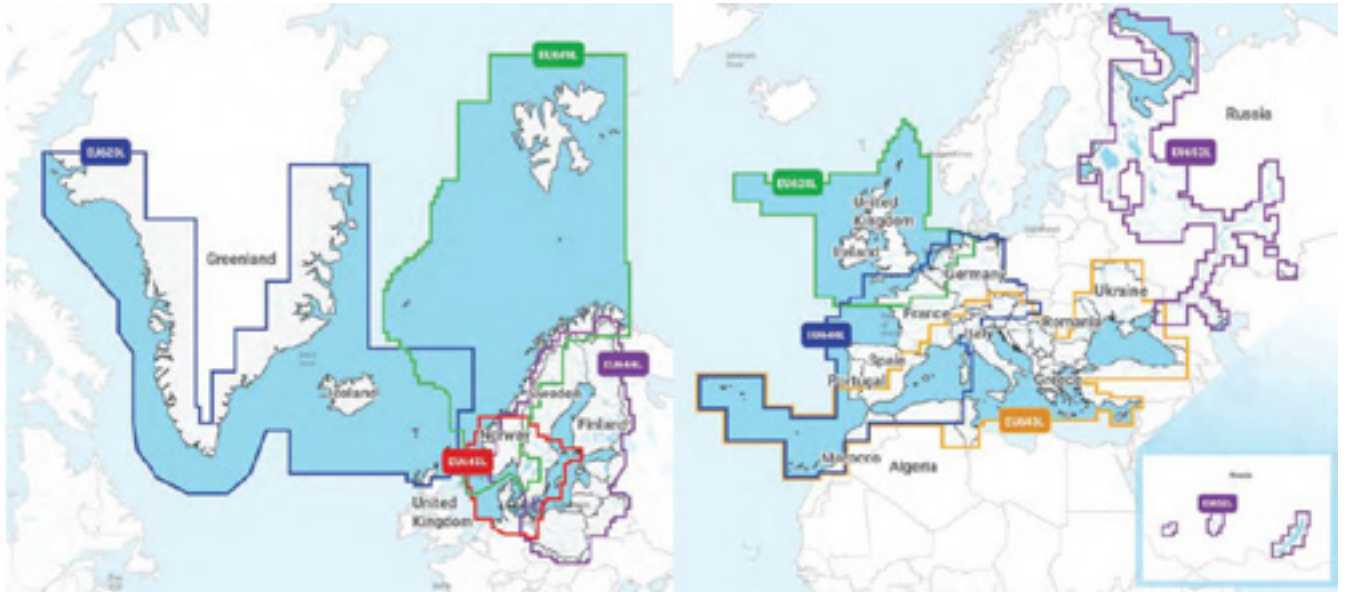
Maps available for download:

- | | |
|------------------------------------|---|
| - EU620L Greenland & Iceland | - AF630L Africa & Middle East |
| - EU644L Baltic Sea | - US001L U.S. & Coastal Canada |
| - EU645L Skagerrak & Kattegat | - SA004L Mexico, Caribbean to Brazil |
| - EU649L Norway | - SA005L Chile, Argentina & Easter Isl. |
| - EU628L U.K., Ireland & Holland | - AE010L Indian Ocean & South China Sea |
| - EU643L Mediterranean & Black Sea | - AE011L China Sea & Japan |
| - EU646L Europe, Central & West | - PC012L Australia & New Zealand |
| - EU652L Russia, West | - PC014L Pacific Islands |



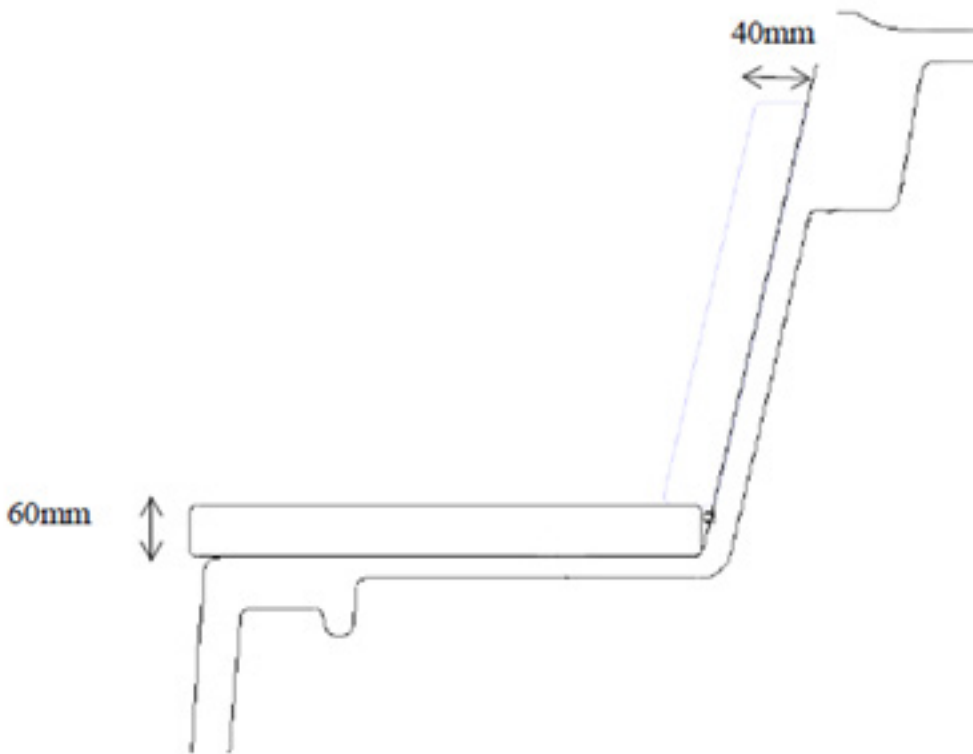
READY TO SAIL EQUIPMENT

Axiom Pro 16" display at helm station



READY TO SAIL EQUIPMENT

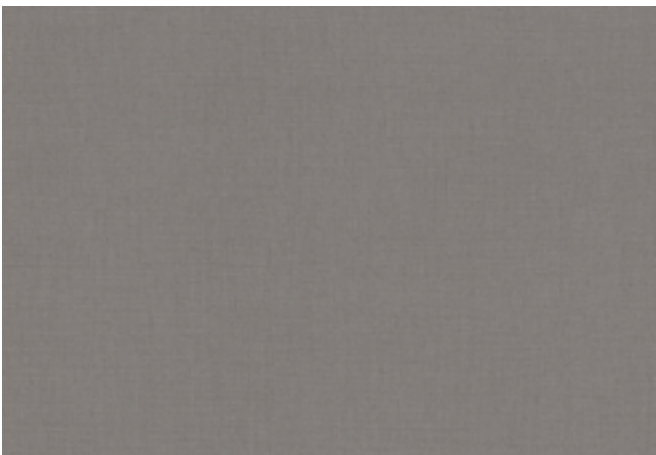
Exterior upholstery



Same foam thickness for all areas: aft cockpit, forward cockpit, Flybridge

Variation in backrest shapes depending on the area

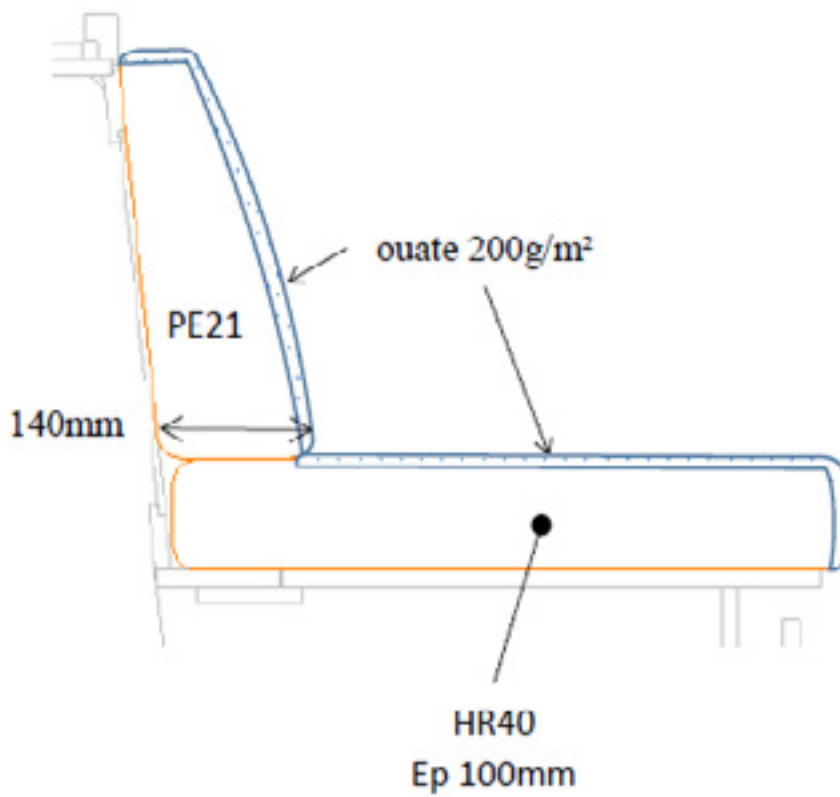
Filter foam



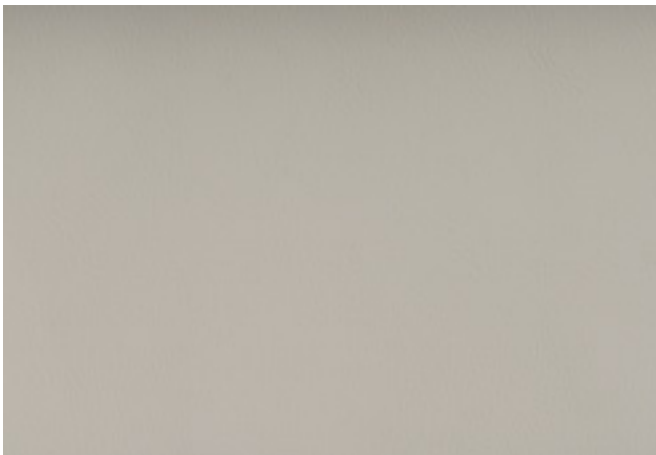
SPRADLING - LINETEX IRON LNT-8577

READY TO SAIL EQUIPMENT

Interior upholstery



3-cabin version: same foam geometry for the owner's cabin bench



SPRADLING - PVC MARLIN BRILLANT WHITE

ATMOSPHERE PACK PANAREA

PRICE LIST REFERENCE: VA-0003-005

Upgrade of the interior style.

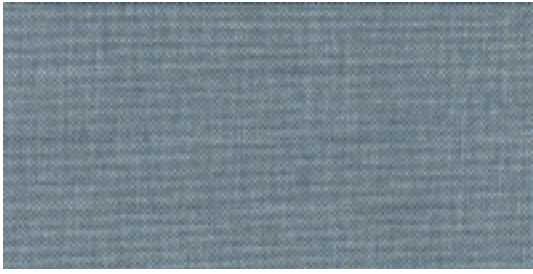
PANAREA - "A pure, fresh harmony of pastel, cool, and neutral tones, evoking the calm of sea at dawn, the soothing softness of sunrise."

This option includes:

- Owner's bench upholstery (*3-cabin version only*),
- Owner's cabin niche (*3-cabin version only*),
- Additional hull liner,
- Additional hull ceiling,
- Decorative cushions,
- Leatherette finish in salon & cabin,
- Leather handrails,
- Bed frame
- Bed headboard
- Upgraded tap in galley and heads,
- Upgraded switch,
- Corian in galley and heads.



ATMOSPHERE PACK PANAREA



Owner's bench upholstery
CREVIN - LIBRA 49



Headboards
SUNBRELLA - LOOP SAND



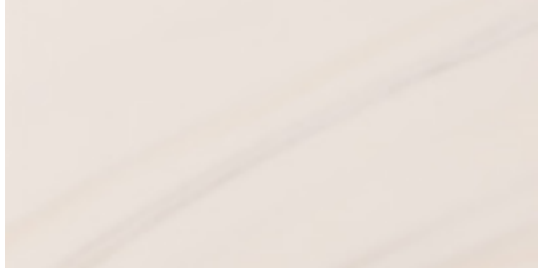
Bed frame
BRU - SIT OUT



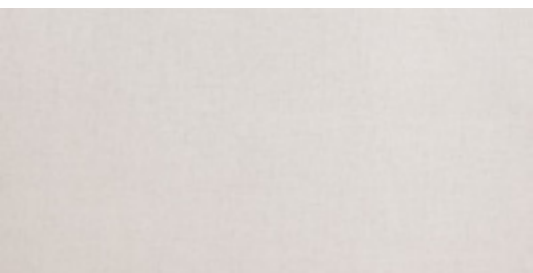
Owner's cabin niche
SIBU - DM Red Brown AR



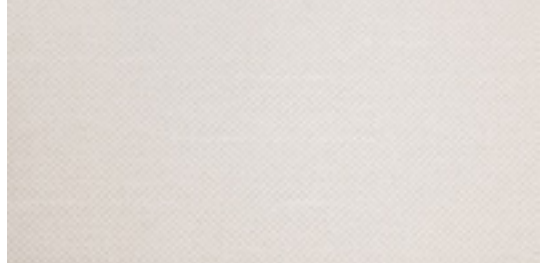
Galley Corian
SILVER BIRCH



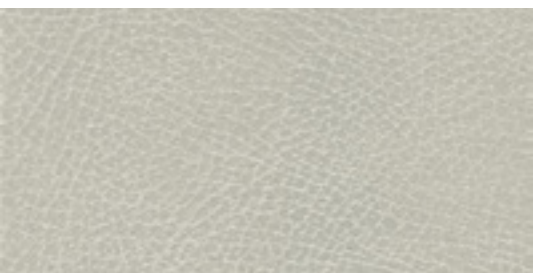
Head Corian
CALACATTA GREIGE



Ceiling
Spradling - Linetex Chalk LNT 9502



Hull liner
Spradling - Maglia Artic MAG 6017



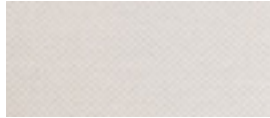
Leatherette finishes
Dolce Vintage Antique White

ATMOSPHERE PACK PANAREA

Niche
Sibu Red Brown AR



Hull liner
Maglia Artic



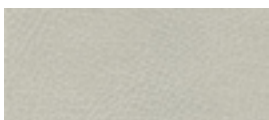
Ceiling
Linetex Chalk



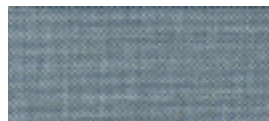
Headboards
Sunbrella Loop



Leatherette finish
Dolce Vintage
Antique White



Bench upholstery
CREVIN - LIBRA 49



Bed frame
BRU - SIT OUT



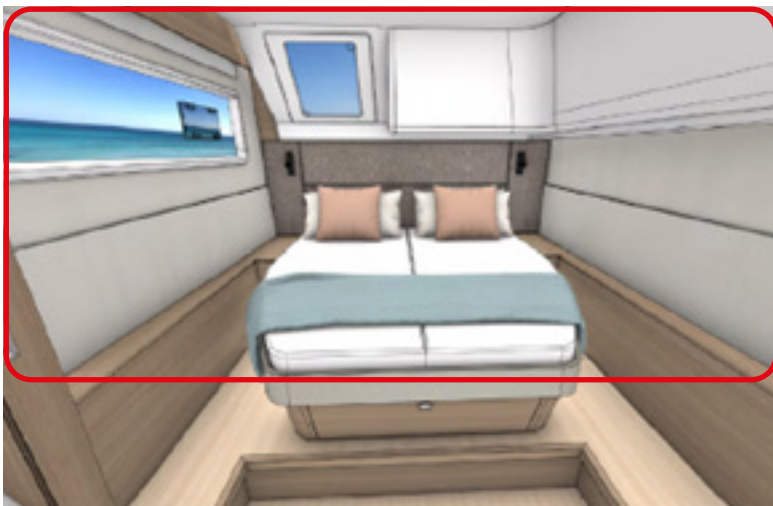
Non contractual picture
More details soon to come

ATMOSPHERE PACK PANAREA

Hull liner



Non contractual picture
 Standard configuration
 Same in every cabins for V3C and V5C



Non contractual picture
 Optional ambiance configuration
 Same in every cabins for V3C and V5C



Non contractual picture
 Optional ambiance configuration
 3-cabin version only
 Standard: wood

ATMOSPHERE PACK PANAREA

Headboards



Non contractual picture
Aft starboard cabins - Headboard shape
 For 3-cabin and 5-cabin versions



Non contractual picture
Port cabins - Headboard shape
 For 3-cabin and 5-cabin versions



Non contractual picture
Fwd starboard cabins - Headboard shape
 5-cabin version only

ATMOSPHERE PACK PANAREA

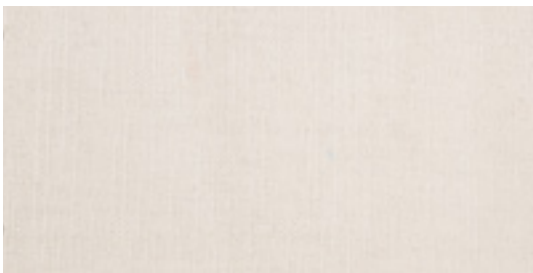
Decorative cushions



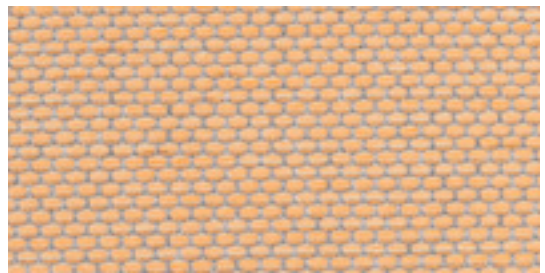
Decorative cushion
CREVIN - LIBRA 49



Decorative cushion
BRU - Sit Out Peony



Decorative cushion
CREVIN - Noah 05



Decorative cushions
Sunbrella - Wadi Shrimp



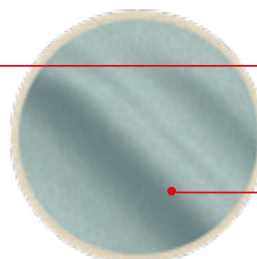
Decorative cushion
BRU - Diana Pool



(x2) : 45 x 45 cm



(x1) : 47 x 28 cm



(x1) : Cylindrical cushion

Non contractual picture

ATMOSPHERE PACK PANAREA

Upgraded galley tap



Sorrento ambiance



Reference: NOBILI - Move
For 3-cabin and 5-cabin versions

Heads: upgrade to the NOBILI - ROAD reference.
For 3-cabin and 5-cabin versions

ATMOSPHERE PACK SORRENTO

PRICE LIST REFERENCE: VA-0003-004

Upgrade of the interior style.

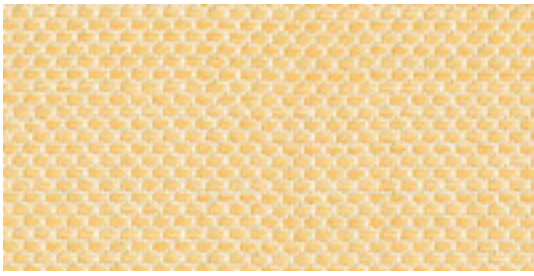
SORRENTO - "A summer afternoon by the sea: turquoise water reflecting the sun, pale sand warming your steps, and in the air the fresh scent of Sorrento lemons. Vivid, vibrant colors that tell the story of summer in all its light.."

This option includes:

- Owner's bench upholstery (*3-cabin version only*),
- Owner's cabin niche (*3-cabin version only*),
- Additional hull liner,
- Additional hull ceiling,
- Decorative cushions,
- Leatherette finish in salon & cabin,
- Leather handrails,
- Bed frame
- Bed headboard
- Upgraded tap in galley and heads,
- Upgraded switch,
- Corian in galley and heads.



ATMOSPHERE PACK SORRENTO



Owner's bench upholstery
Sunbrella - Wadi Riviera



Headboards
Sunbrella - Loop Spa



Bed frame
BRU - SIT OUT



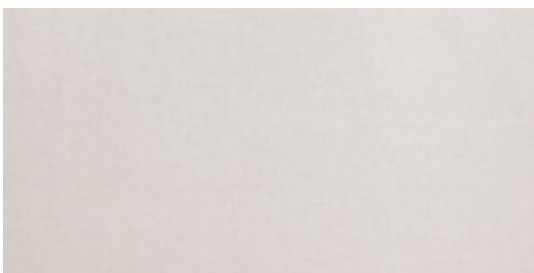
Owner's cabin niche
SIBU - DM Red Brown AR



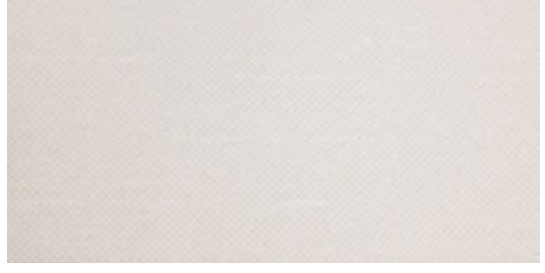
Galley Corian
Corian Silver Birch



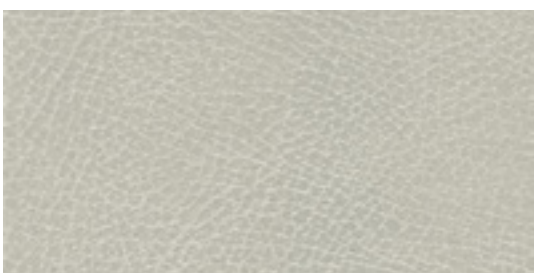
Head Corian
Corian Verdant



Ceiling
Spradling - Linetex Chalk LNT 9502



Hull liner
Spradling - Maglia Artic MAG 6017



Leatherette finishes
Dolce Vintage Antique White

ATMOSPHERE PACK SORRENTO

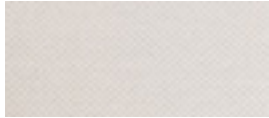
Niche
Sibu Red Brown AR



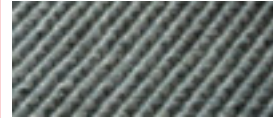
Ceiling
Linutex Chalk



Hull liner
Maglia Artic



Headboards
Sunbrella Spa



Leatherette finish
Dolce Vintage
Antique White



Bench upholstery
Sunbrella - Wadi Riviera



Bed frame
BRU - SIT OUT



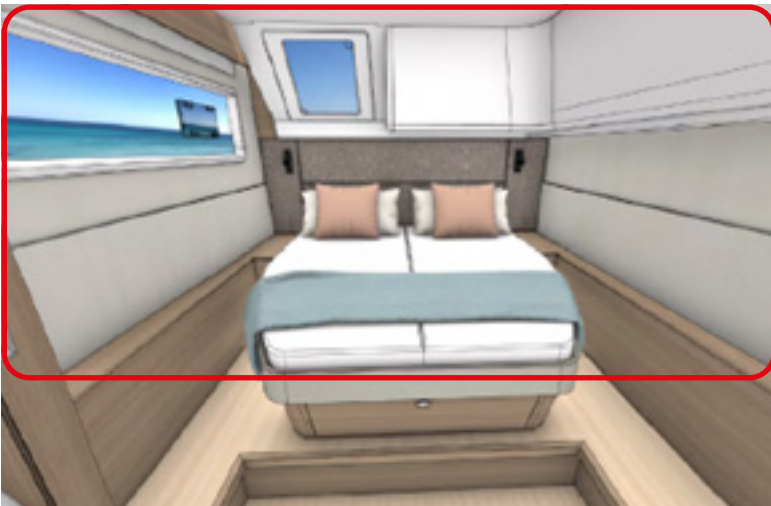
Non contractual picture
More details soon to come

ATMOSPHERE PACK SORRENTO

Hull liner



Non contractual picture
 Standard configuration
 Same in every cabins for V3C and V5C



Non contractual picture
 Optional ambiance configuration
 Same in every cabins for V3C and V5C



Non contractual picture
 Optional ambiance configuration
 3-cabin version only
 Standard: wood

ATMOSPHERE PACK SORRENTO

Headboards



Non contractual picture
Aft starboard cabins - Headboard shape
 For 3-cabin and 5-cabin versions



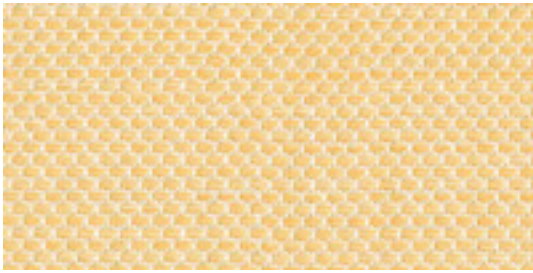
Non contractual picture
Port cabins - Headboard shape
 For 3-cabin and 5-cabin versions



Non contractual picture
Fwd starboard cabins - Headboard shape
 5-cabin version only

ATMOSPHERE PACK SORRENTO

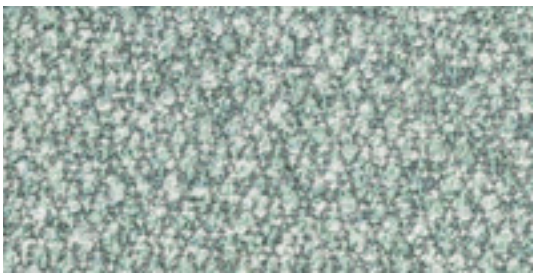
Decorative cushions



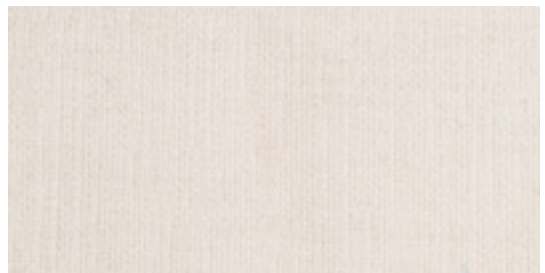
Decorative cushion
Sunbrella - Wadi Riviera



Decorative cushion
Sunbrella - Natte Sunlight



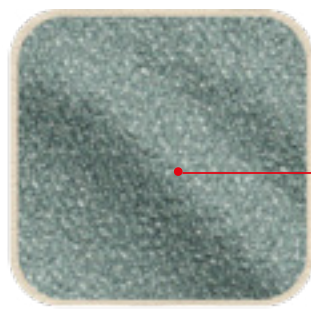
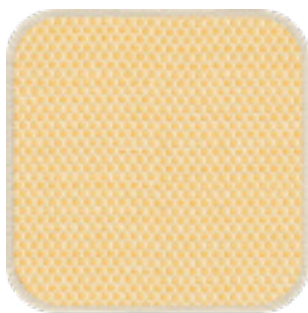
Decorative cushion
BRU - Raptor Duckegg



Decorative cushions
Crevin - Noah 05



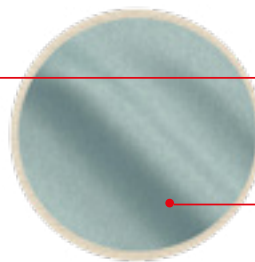
Decorative cushion
BRU - Diana Pool



(x2) : 45 x 45 cm



(x1) : 47 x 28 cm



(x1) : Cylindrical cushion

Non contractual picture

ATMOSPHERE PACK SORRENTO

Upgraded galley tap



Reference: NOBILI - Move
For 3-cabin and 5-cabin versions

Heads: upgrade to the NOBILI - ROAD reference.
For 3-cabin and 5-cabin versions

SERENITY PACK

PRICE LIST REFERENCE: VA-0007-001

5-cabin version only

This option includes:

- Stainless steel flame arrestor
- Aluminium lip for companionway stairs
- Dark blue mattress

Aluminium lip for companionway stairs



Non contractual picture

SERENITY PACK

Dark blue mattress



Picture onboard Lagoon 43 - Non contractual | Color: Dark Blue

Stainless steel flame arrestor



Picture onboard Lagoon 43 - Non contractual
S/S protection in the galley



03

In & Out Upholstery

Interior upholstery: PVC Marlin Brillant White (II-0006-007)

Interior upholstery: Grand Comfort Panarea (II-0006-090)

Interior upholstery: Grand Comfort Sorrento (II-0006-087)

Exterior upholstery: PVC Linetex Iron (BM-0001-047)

Exterior upholstery: Panarea (BM-0001-046)

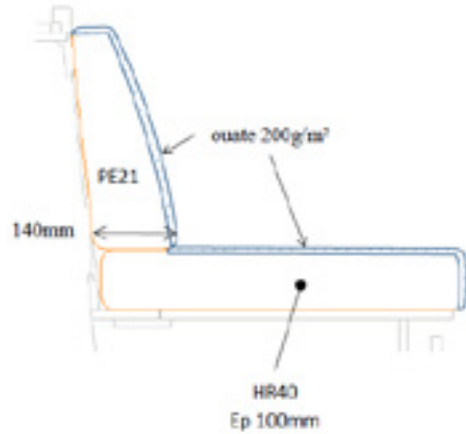
Exterior upholstery: Sorrento (BM-0001-045)

INTERIOR UPHOLSTERY

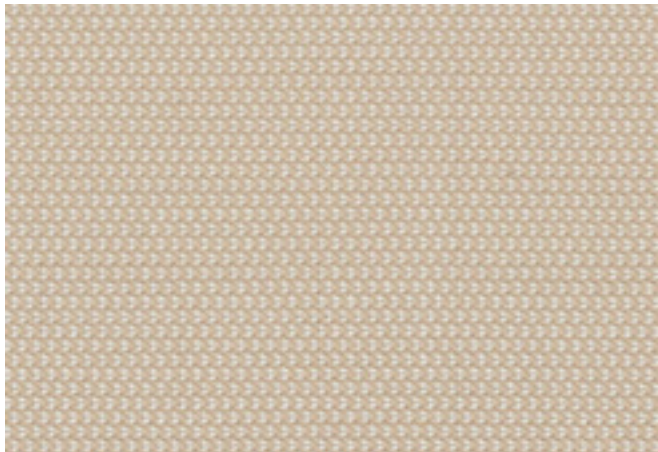
PRICE LIST REFERENCE: II-0006-007 / II-0006-090 / II-0006-087

READY TO SAIL EQUIPMENT

SPRADLING - PVC MARLIN BRILLANT WHITE



OPTIONS



PANAREA AMBIANCE
SUNBRELLA - LOPI ANTIQUE LOP R034 140



SORRENTO AMBIANCE
CREVIN - NOAH 33

Ready to Sail Equipment foam specifications:

- Seats: 100mm
- Backrests : 140mm

Upgrade foam specifications:

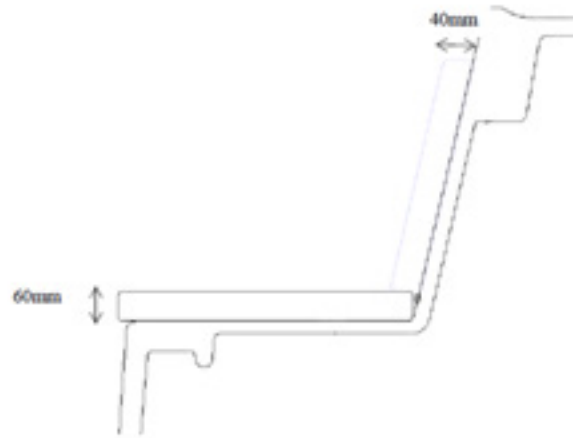
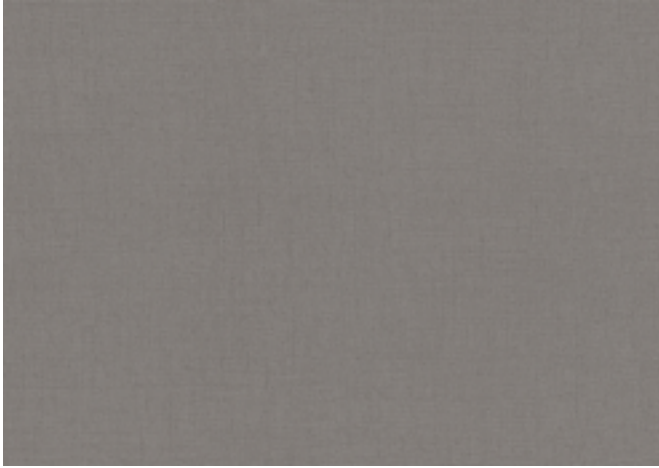
- Seats: 160mm
- Backrests : 160mm

EXTERIOR UPHOLSTERY

PRICE LIST REFERENCE: BM-0001-047 / BM-0001-046 / BM-0001-045

READY TO SAIL EQUIPMENT

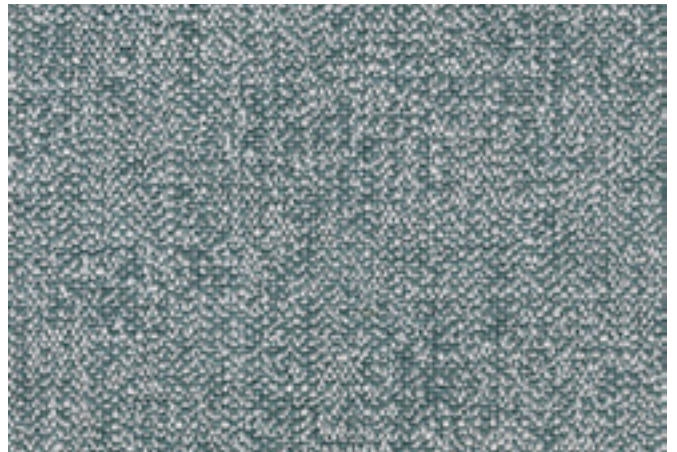
SPRADLING - PVC LINETEX IRON LNT-8577



OPTIONS



PANAREA AMBIANCE
BRU - SIT OUT 10 SILVER



SORRENTO AMBIANCE
CREVIN - FIJI 49

Ready to Sail Equipment foam specifications:

- Seats: 60mm
- Backrests : 40mm (according to the shapes specifications depending on the area)

Upgrade foam specifications:

- Seats: 100mm
- Backrests : 80mm (according to the shapes specifications depending on the area)



04

Motorization

Propeller: three blades folding Flexofold (MP-0006-003)

PROPELLER: 3 BLADES FOLDING

PRICE LIST REFERENCE: MP-0006-003

Details soon to come, following the engine trials on the #001 hull

Replaces standard fixed propellers

Brand: Fenwick - Flex-o-fold



05

Sails & Rigging

Classic mast with square top main sail and lazy bag (AM-0008-002)

Grey aluminum canoe boom (AM-0008-018)

Code 0 manual furler gear (AA-0002-003)

Code 0 electric furler gear (AA-0002-004)

Front sail reel: electric (AA-0003-003)

Winches and mainsail traveller: electric (AA-0001-003)

Code 0 sail: XRP (AV-0004-005)

Roach mainsail

Furling downwind sail (AV-0009-001)

CLASSIC MAST WITH SQUARE TOP MAIN SAIL AND LAZY BAG

PRICE LIST REFERENCE: AM-0008-002

Picture soon to come

Comes in replacement of the standard furling mast.

This option includes:

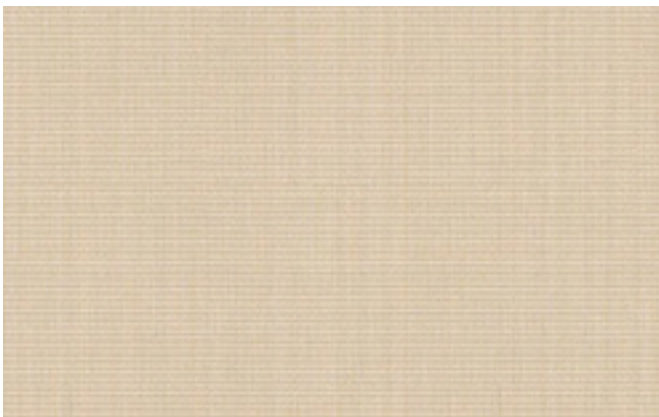
- Classic aluminium mast and boom,
- Lazy-bag (color according to the ambiance selected),
- Square top mainsail.

Mast brand: Z-Spars

Mainsail brand: Elvstrom

Mainsail area: 84 m² | 904 sq.ft

Upwind sail area: 128 m² | 1,377 sq.ft



PANAREA AMBIANCE
SUNBRELLA - MOONSTONE SUNT2 P081 152



SORRENTO AMBIANCE
SUNBRELLA - EUCALYPTUS SUNT2 P088 152

GREY ALUMINUM CANOE BOOM (WITH COVER)

PRICE LIST REFERENCE: AM-0008-018

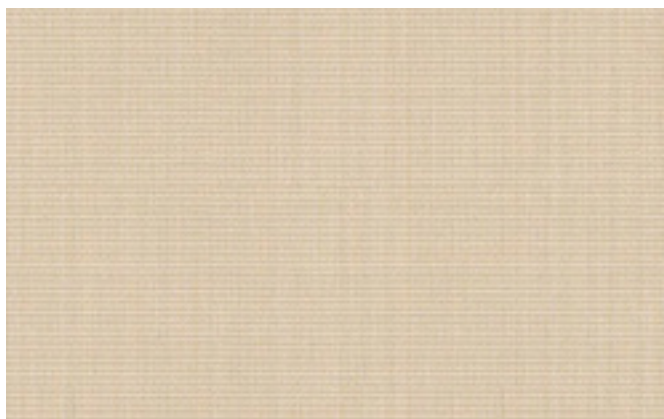
Picture soon to come

This option includes:

- Grey aluminium canoe boom,
- Lazy-bag (color according to the ambiance selected).

Mast brand: Z-Spars

AM-0008-002 "CLASSIC MAST WITH SQUARE TOP MAIN SAIL AND LAZY BAG"
option compulsory.



PANAREA AMBIANCE
SUNBRELLA - MOONSTONE SUNT2 P081 152



SORRENTO AMBIANCE
SUNBRELLA - EUCALYPTUS SUNT2 P088 152

CODE 0 MANUAL FURLER GEAR

PRICE LIST REFERENCE: AA-0002-003



Includes:

- 2 x manual HARKEN winch 50.2 (port side & starboard),
- 1 x FACNOR FX-4500 furler,
- 1 x FACNOR aluminium pole,
- 1 x bobstay,
- Blocks,
- Jammers,
- Halyard and sheet,

CODE 0 ELECTRIC FURLER GEAR

PRICE LIST REFERENCE: AA-0002-004



Includes:

- 2 x electrical HARKEN winch 50.2 (port side & starboard),
- 1 x FACNOR IBFXE 7000 furler,
- 1 x FACNOR aluminium pole,
- 1 x bobstay,
- Blocks,
- Jammers,
- Halyard and sheet,

FRONT SAIL REEL: ELECTRIC

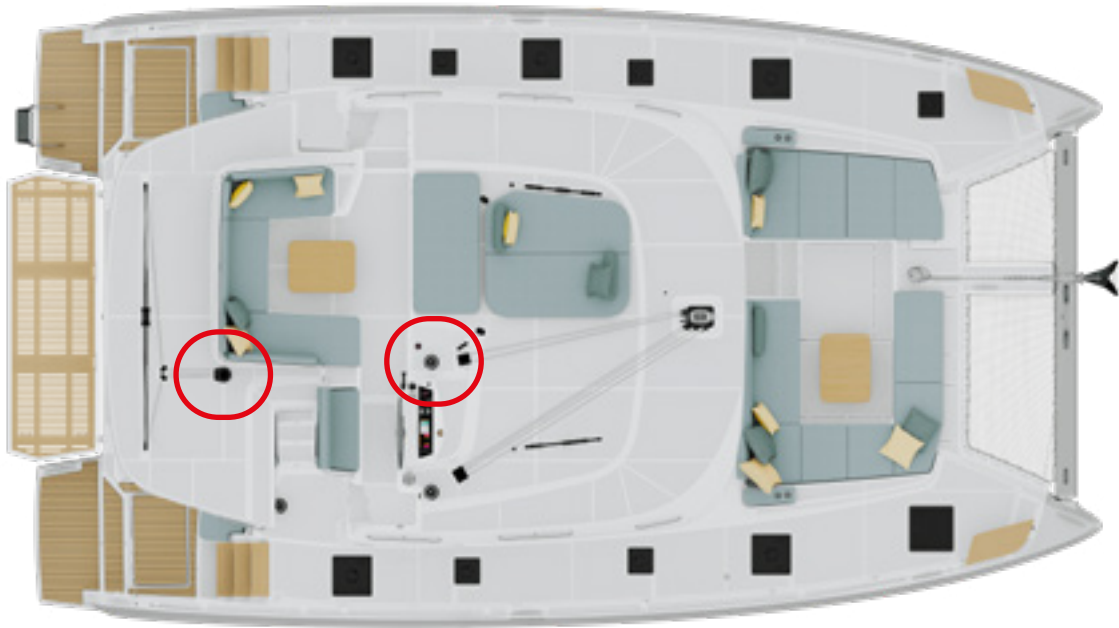
PRICE LIST REFERENCE: AA-0003-003

Picture soon to come

Brand & reference: FACNOR EC47 furler

WINCHES AND MAINSAIL TRAVELLER: ELECTRIC

PRICE LIST REFERENCE: AA-0001-003



Brand & Reference: Harken I 50.2 STEA

The evolution comes in addition to the electrical winch included in the Ready to Sail Equipment.

+ Harken Flatwinder

CODE 0 SAIL: XRP

PRICE LIST REFERENCE: AV-0004-005

Picture soon to come

Sail area: 86 m² | 925 sq.ft

Brand: Elvstrom

Specifications: XRP

- Made from recycled polyester,
- Soft and easy-to-handle fabric,
- The arrangement of the fibers gives the final product good stability and excellent resistance to elongation.

This option only includes the sail.

AA-0002-003 or AA-0002-004 "CODE 0 GEAR" option compulsory.

ROACH MAINSAIL

Picture soon to come

Sail area: 80 m² | 861 sq.ft

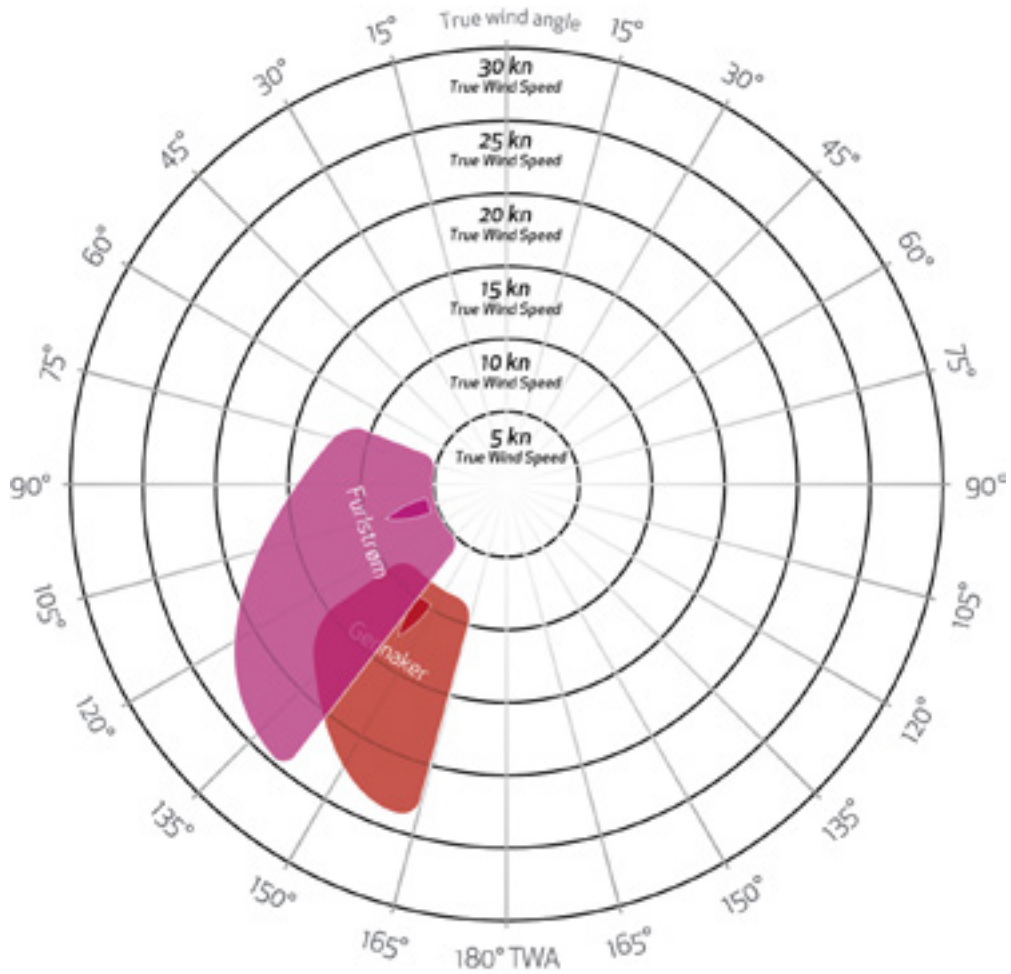
Brand: Elvstrom

This option comes in replacement of the square top mainsail included in the classic mast option.

AM-0008-002 "CLASSIC MAST WITH SQUARE TOP MAIN SAIL AND LAZY BAG"
option compulsory.

FURLING DOWNWIND SAIL

PRICE LIST REFERENCE: AV-0009-001



Sail area: 121 m² | 1,302 sq.ft

Sail type: Furlstrom

Brand: Elvstrom

Compatible with the AA-0002-003 or AA-0002-004 "CODE 0 GEAR" option.



06

Aft, Forward Cockpit & Flybridge

AFT COCKPIT

Aft cockpit table: wood (BM-0027-005)

Director seat (BM-0007-002)

Aft cockpits transoms lining: Iroko (BD-0019-003)

Aft platform: electric (BR-0004-005)

Board access gangway: floating (BB-0002-002)

Aft cockpit additional bath ladder and hand shower (ED-0015-001)

Underwater lighting (CE-0001-001)

Aft cockpit courtesy curtains (BT-0027-001)

Aft cockpit enclosure (BT-0009-001)

Covers kit (BT-0004-001)

FORWARD COCKPIT

Forward cockpit table: wood (BM-0043-006)

Trampoline seat: sun lounger (BM-0035-002)

Forward cockpit sun awning (BT-0012-001)

FLYBRIDGE

Flybridge cockpit table: wood (BM-0013-005)

Flybridge hard top: composite (BT-0013-002)

Flybridge enclosure (BT-0015-001)

Flybridge courtesy curtains (BT-0006-001)

AFT COCKPIT TABLE: WOOD

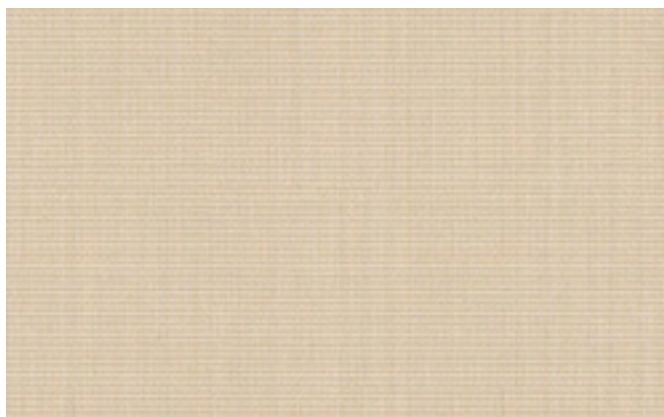
PRICE LIST REFERENCE: BM-0027-005



Dimensions: *TBC*

Replaces standard GRP table: *TBC*

The option includes a table cover - Color according to the selected exterior ambiance.



PANAREA AMBIANCE
SUNBRELLA - MOONSTONE SUNT2 P081 152



SORRENTO AMBIANCE
SUNBRELLA - EUCALYPTUS SUNT2 P088 152

DIRECTOR CHAIR

PRICE LIST REFERENCE: BM-0007-002



Foldable director chairs in the aft cockpit

Brand: VARASCHIN

Model: VICTOR

Color: Grey

AFT COCKPITS TRANSOMS LINING: IROKO

PRICE LIST REFERENCE: BD-0019-003



IROKO

Natural wood with black joints.

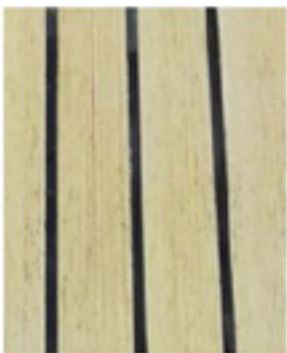
Glued veneered layers

Sustainable solution coming from sustainably managed forest and FSC certified.

Same maintenance as for Teak.

Like all natural woods, Iroko's colour changes as it ages.

The wood is yellow after cutting, and quickly changes to an orange brown in the first few days. It will then slowly change to a greyish colour in the following months, very similar to teak.



Yellow tint



+3 / 4 days



+8 months

AFT PLATFORM: ELECTRIC

PRICE LIST REFERENCE: BR-0004-005



Dimensions: 3,00 x 1,20 m | 9'10" x 3'11"

Max. load: 200 kg | 441 lbs

BOARD ACCESS GANGWAY: FLOATING

PRICE LIST REFERENCE: BB-0002-002



Open: 2600 x 350mm / 8'6" x 1'2"

Closed: 1300 x 350mm / 4'4" x 1'2"

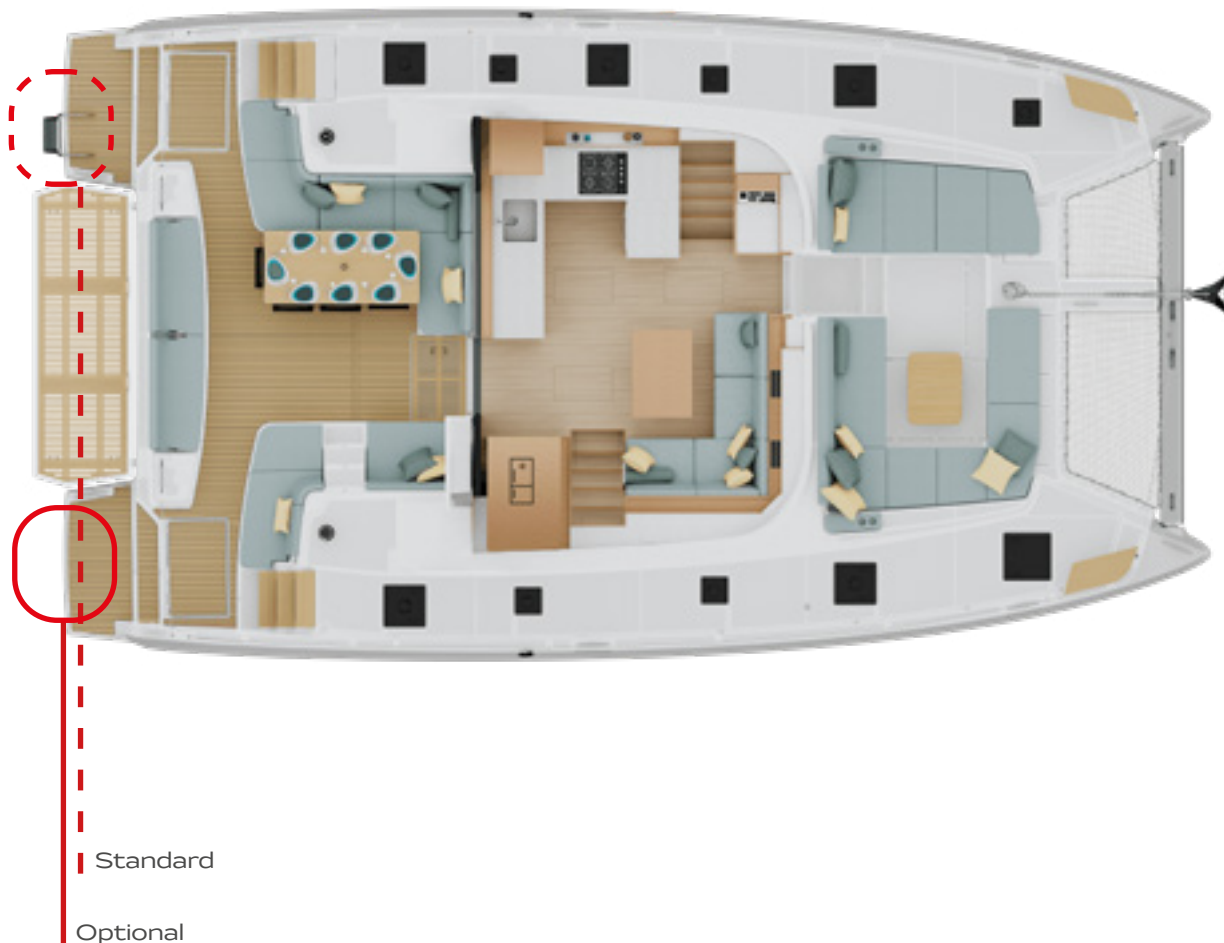
Includes:

- Bag
- 2 x inlet sleeves



AFT COCKPIT ADDITIONAL BATH LADDER AND SHOWER

PRICE LIST REFERENCE: ED-0015-001



UNDERWATER LIGHTING

PRICE LIST REFERENCE: CE-0001-001

Detail soon to come

Quantity: 4

Color: Blue

Supplier / Reference: Lumishore O10-04504-00

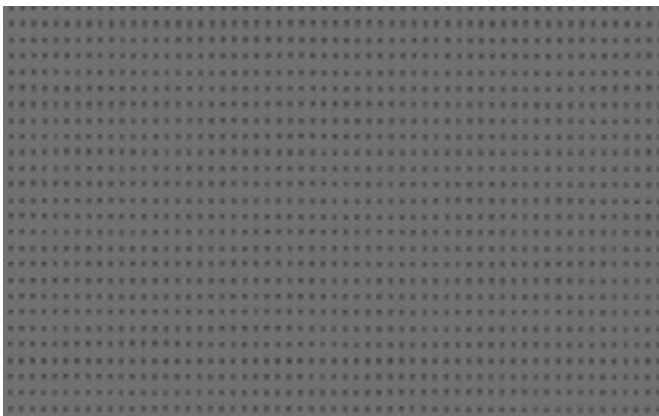


AFT COURTESY CURTAINS

PRICE LIST REFERENCE: BT-0027-001



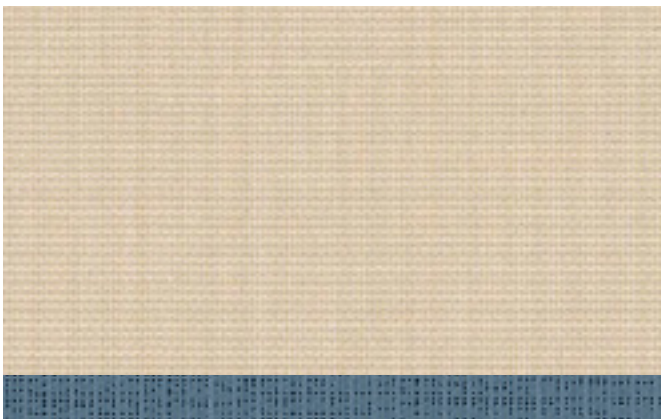
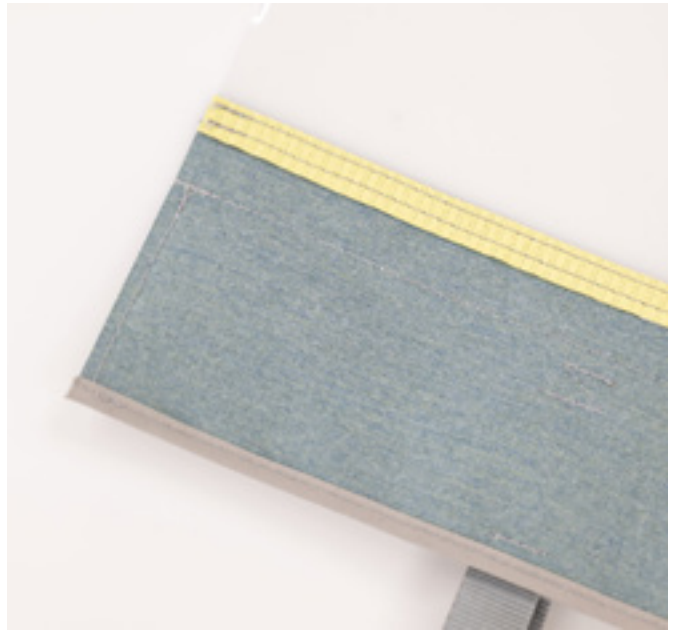
Non contractuel picture



SERGE FERRARI
SOLTIS 86-2167 BETON

AFT COCKPIT ENCLOSURE

PRICE LIST REFERENCE: BT-0009-001



PANAREA AMBIANCE
SUNBRELLA - MOONSTONE SUNT2 P081 152
+ SERGE FERRARI - SOLTIS 92 -51178 GRIS CELESTE



SORRENTO AMBIANCE
SUNBRELLA - EUCALYPTUS SUNT2 P088 152
+ SERGE FERRARI - SOLTIS 96-50846 CITRUS

COVER KIT

PRICE LIST REFERENCE: BT-0004-001

Picture soon to come



PANAREA AMBIANCE
SUNBRELLA - MOONSTONE SUNT2 P081 152



SORRENTO AMBIANCE
SUNBRELLA - EUCALYPTUS SUNT2 P088 152

FORWARD COCKPIT TABLE

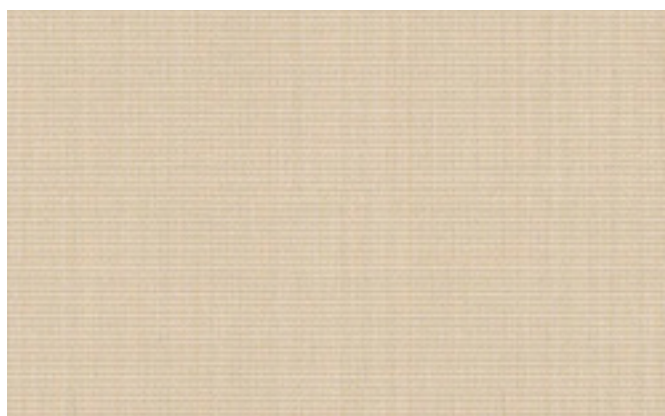
PRICE LIST REFERENCE: BM-0043-006



Non contractual picture

Dimensions: *TBC*

The option includes a table cover - Color according to the selected exterior ambiance.



PANAREA AMBIANCE
SUNBRELLA - MOONSTONE SUNT2 P081 152



SORRENTO AMBIANCE
SUNBRELLA - EUCALYPTUS SUNT2 P088 152

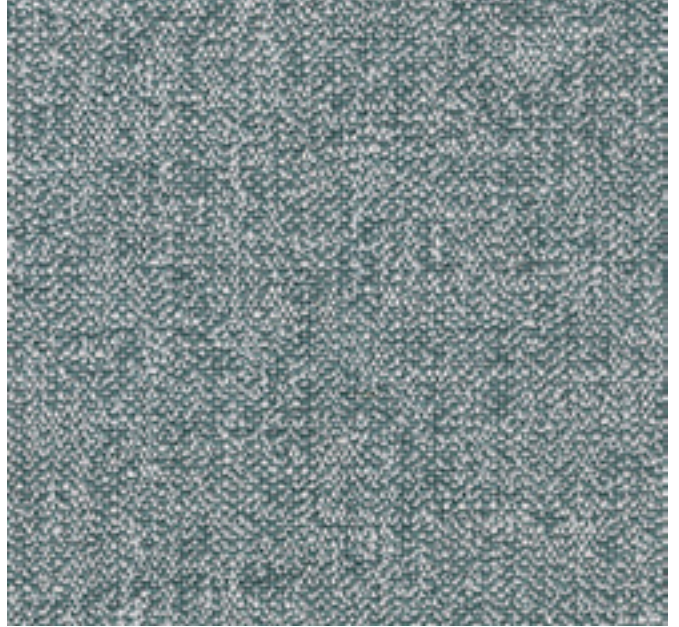
TRAMPOLINE SEAT: SUN LOUNGER

PRICE LIST REFERENCE: BM-0035-002

Picture soon to come



PANAREA AMBIANCE
BRU - SIT OUT 10 SILVER



SORRENTO AMBIANCE
CREVIN - FIJI 49

FORWARD COCKPIT SUN AWNING

PRICE LIST REFERENCE: BT-0012-001



Picture onboard Lagoon 46 Iconic

The option includes:
 - 2 carbon posts,
 - 1 sunshade.

Item	Description	Quantity	Unit Price	Total Price
1	Sunshade	1	12000	12000
2	Carbon post	2	6000	12000
3	Carbon post	2	6000	12000
4	Carbon post	2	6000	12000
5	Carbon post	2	6000	12000
6	Carbon post	2	6000	12000
7	Carbon post	2	6000	12000
8	Carbon post	2	6000	12000
9	Carbon post	2	6000	12000
10	Carbon post	2	6000	12000
11	Carbon post	2	6000	12000
12	Carbon post	2	6000	12000
13	Carbon post	2	6000	12000
14	Carbon post	2	6000	12000
15	Carbon post	2	6000	12000
16	Carbon post	2	6000	12000
17	Carbon post	2	6000	12000
18	Carbon post	2	6000	12000
19	Carbon post	2	6000	12000
20	Carbon post	2	6000	12000
21	Carbon post	2	6000	12000
22	Carbon post	2	6000	12000
23	Carbon post	2	6000	12000
24	Carbon post	2	6000	12000
25	Carbon post	2	6000	12000
26	Carbon post	2	6000	12000
27	Carbon post	2	6000	12000
28	Carbon post	2	6000	12000
29	Carbon post	2	6000	12000
30	Carbon post	2	6000	12000
31	Carbon post	2	6000	12000
32	Carbon post	2	6000	12000
33	Carbon post	2	6000	12000
34	Carbon post	2	6000	12000
35	Carbon post	2	6000	12000
36	Carbon post	2	6000	12000
37	Carbon post	2	6000	12000
38	Carbon post	2	6000	12000
39	Carbon post	2	6000	12000
40	Carbon post	2	6000	12000
41	Carbon post	2	6000	12000
42	Carbon post	2	6000	12000
43	Carbon post	2	6000	12000
44	Carbon post	2	6000	12000
45	Carbon post	2	6000	12000
46	Carbon post	2	6000	12000
47	Carbon post	2	6000	12000
48	Carbon post	2	6000	12000
49	Carbon post	2	6000	12000
50	Carbon post	2	6000	12000
51	Carbon post	2	6000	12000
52	Carbon post	2	6000	12000
53	Carbon post	2	6000	12000
54	Carbon post	2	6000	12000
55	Carbon post	2	6000	12000
56	Carbon post	2	6000	12000
57	Carbon post	2	6000	12000
58	Carbon post	2	6000	12000
59	Carbon post	2	6000	12000
60	Carbon post	2	6000	12000
61	Carbon post	2	6000	12000
62	Carbon post	2	6000	12000
63	Carbon post	2	6000	12000
64	Carbon post	2	6000	12000
65	Carbon post	2	6000	12000
66	Carbon post	2	6000	12000
67	Carbon post	2	6000	12000
68	Carbon post	2	6000	12000
69	Carbon post	2	6000	12000
70	Carbon post	2	6000	12000
71	Carbon post	2	6000	12000
72	Carbon post	2	6000	12000
73	Carbon post	2	6000	12000
74	Carbon post	2	6000	12000
75	Carbon post	2	6000	12000
76	Carbon post	2	6000	12000
77	Carbon post	2	6000	12000
78	Carbon post	2	6000	12000
79	Carbon post	2	6000	12000
80	Carbon post	2	6000	12000
81	Carbon post	2	6000	12000
82	Carbon post	2	6000	12000
83	Carbon post	2	6000	12000
84	Carbon post	2	6000	12000
85	Carbon post	2	6000	12000
86	Carbon post	2	6000	12000
87	Carbon post	2	6000	12000
88	Carbon post	2	6000	12000
89	Carbon post	2	6000	12000
90	Carbon post	2	6000	12000
91	Carbon post	2	6000	12000
92	Carbon post	2	6000	12000
93	Carbon post	2	6000	12000
94	Carbon post	2	6000	12000
95	Carbon post	2	6000	12000
96	Carbon post	2	6000	12000
97	Carbon post	2	6000	12000
98	Carbon post	2	6000	12000
99	Carbon post	2	6000	12000
100	Carbon post	2	6000	12000

SERGE FERRARI
 SOLTIS 92-2044 BLANC

FLYBRIDGE TABLE: WOOD

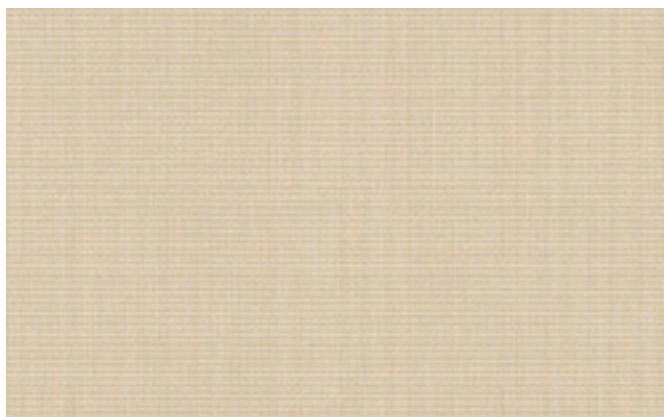
PRICE LIST REFERENCE: BM-0013-005



Non contractual picture

Dimensions: *TBC*

The option includes a table cover - Color according to the selected exterior ambiance.



PANAREA AMBIANCE
SUNBRELLA - MOONSTONE SUNT2 P081 152



SORRENTO AMBIANCE
SUNBRELLA - EUCALYPTUS SUNT2 P088 152

FLYBRIDGE HARD TOP: COMPOSITE

PRICE LIST REFERENCE: BT-0013-002



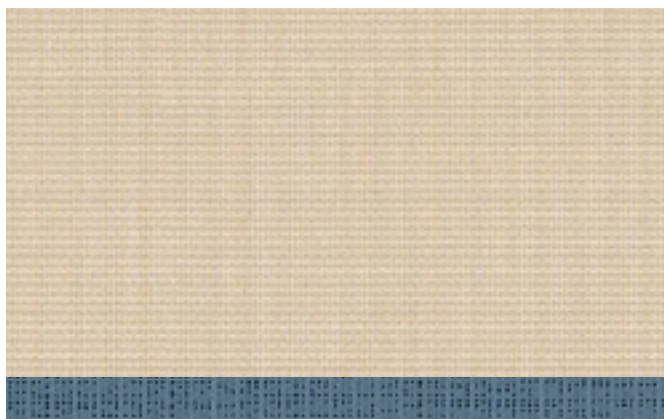
Non contractual picture

Rigid bimini in GRP with integrated windows to watch the sails
Stainless steel feet

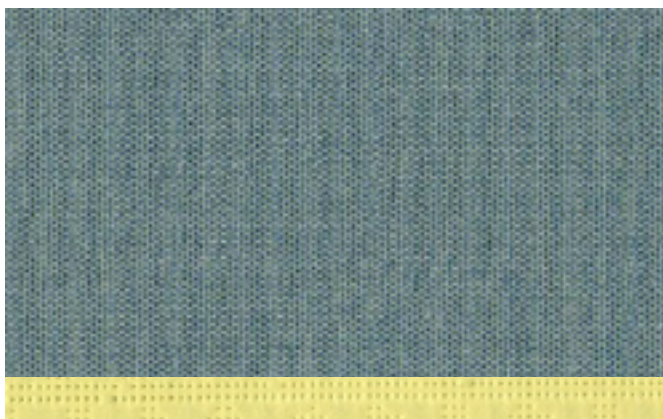
The Flybidge enclosures are not integrated in the option.
Please refer to the BT-0015-001 "FLYBRIDGE ENCLOSURE" option.

FLYBRIDGE ENCLOSURE

PRICE LIST REFERENCE: BT-0015-001



PANAREA AMBIANCE
SUNBRELLA - MOONSTONE SUNT2 P081 152
+ SERGE FERRARI - SOLTIS 92 -51178 GRIS CELESTE

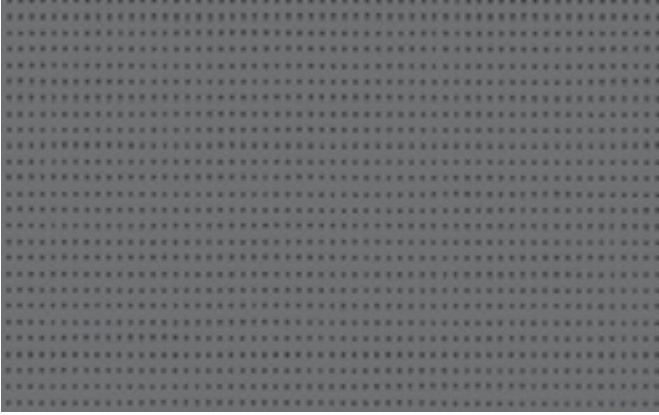


SORRENTO AMBIANCE
SUNBRELLA - EUCALYPTUS SUNT2 P088 152
+ SERGE FERRARI - SOLTIS 96-50846 CITRUS

FLYBRIDGE COURTESY CURTAINS

PRICE LIST REFERENCE: BT-0006-001

Picture soon to come



SERGE FERRARI
SOLTIS 86-2167 BETON

For sides and aft of the Flybridge only.

This sunscreen protects the interior from heat and maintains privacy while providing optimal visibility to the outside thanks to the transparency of this product.

DINGHY: HIGHFIELD CL 360 20HP ENGINE

PRICE LIST REFERENCE: BR-0002-018



Brand & Model: CL360 Highfield

Specifications:

- Overall Length: 3.60 m | 11'10"
- Overall Width: 1.70 m | 5'7"
- Weight empty boat: 75 kg | 165 lbs
- Maximum charge: 561 kg | 1237 lbs

Engines: 20HP

Includes:

- Waterproof storage bag

DINGHY LIFT: ELECTRIC

PRICE LIST REFERENCE: BR-0003-003

Details soon to come

This option includes an electrical winch : Harken 50.2 STAEH

Max load: 200 kg | 441 lbs

OUTBOARD ENGINE BRACKET

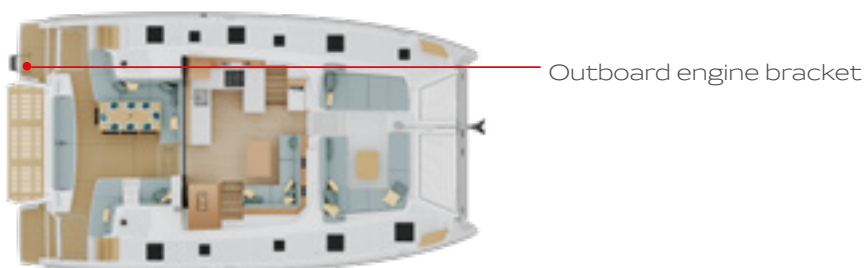
PRICE LIST REFERENCE: MP-0016-001



Picture onboard Lagoon 43

Maximum 20 HP / CV

LOCATION ON BOARD





08

Onboard energy & AC

Genset: Mase Mariner (JG-0001-105 | JG-0001-058)

Genset: Onan (JG-0001-030 | JG-0001-090)

Inverter: 2KVA (JC-0001-003 | JC-0001-007 | JC-0001-008)

Roof solar panels (JP-0002-001)

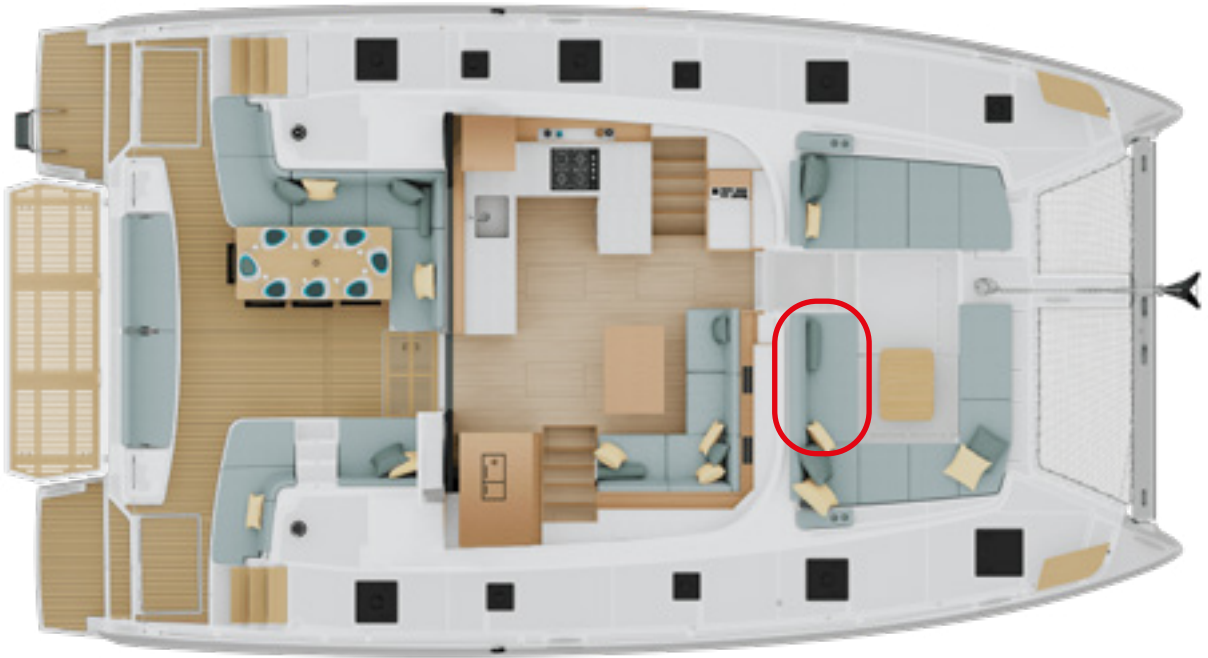
Hard top solar panels (JP-0001-001)

Comfort outlet: multistandard (FD-0002-003)

Air conditioning (CC-0001-001)

GENSET: MASE MARINER

PRICE LIST REFERENCE: JG-0001-105 | JG-0001-058



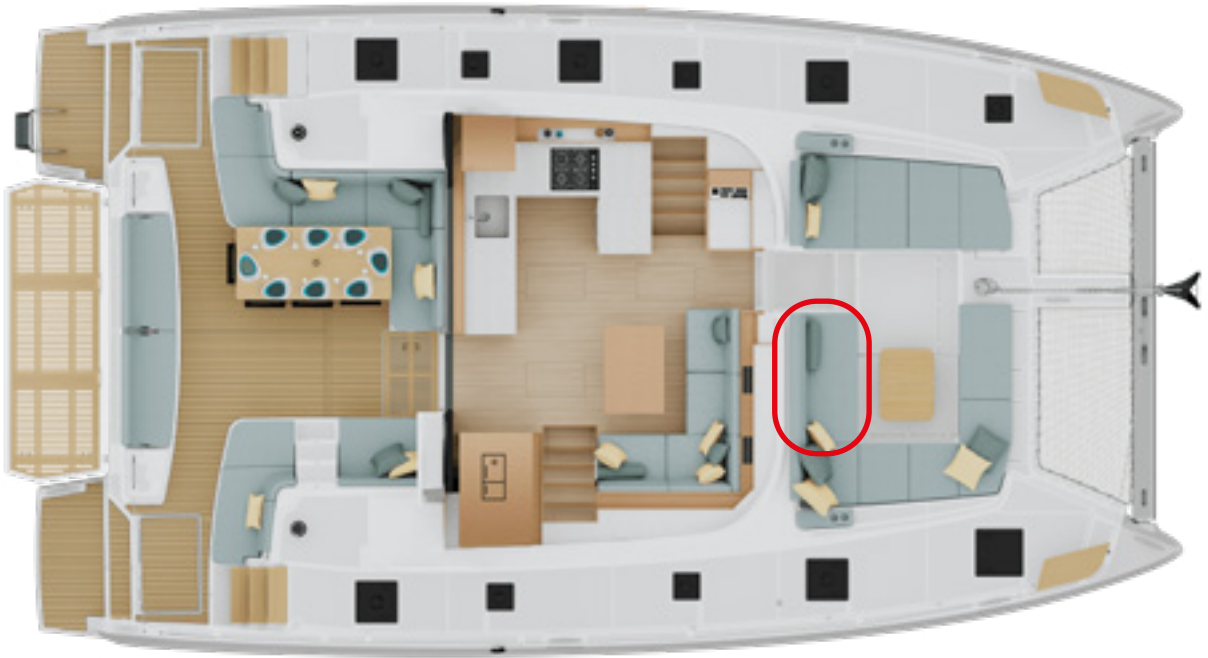
Brand: Mase Mariner

Reference:

- 220 50: MASE 12KVA
- 220 60: MASE 13,6KVA

GENSET: ONAN

PRICE LIST REFERENCE: JG-0001-030 | JG-0001-090



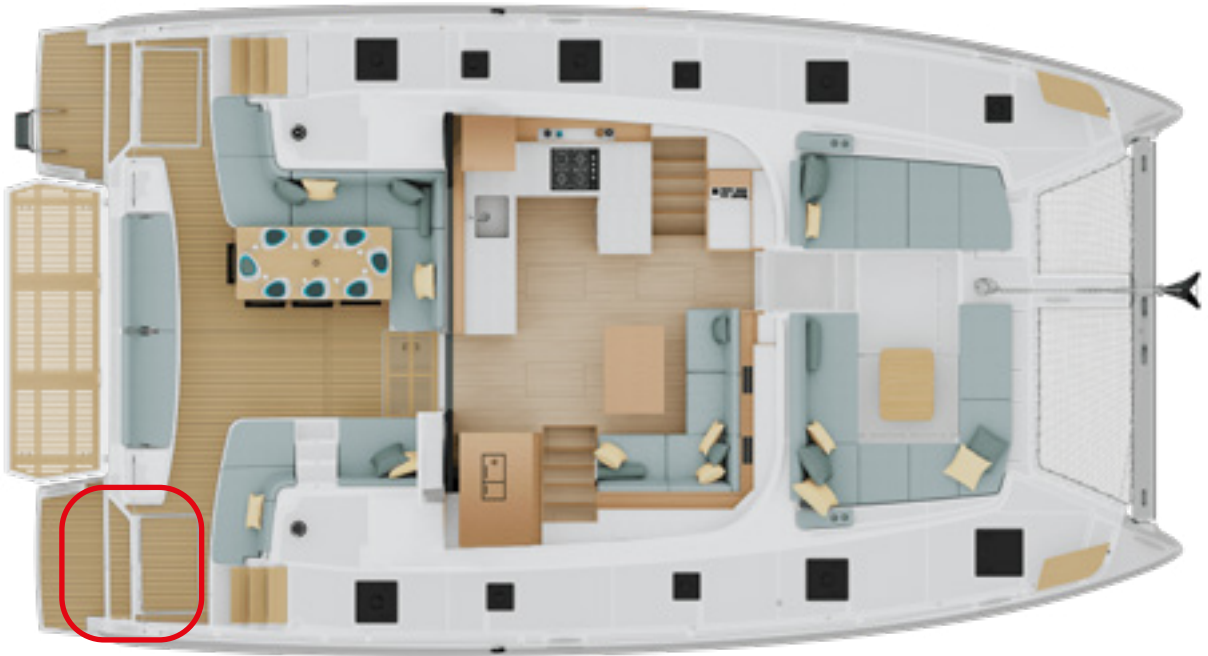
Brand: Onan

Reference:

- 220 50: ONAN 11KVA
- 220 60: ONAN 11,5KVA

INVERTER

PRICE LIST REFERENCE: JC-0001-003 | JC-0001-007 | JC-0001-008

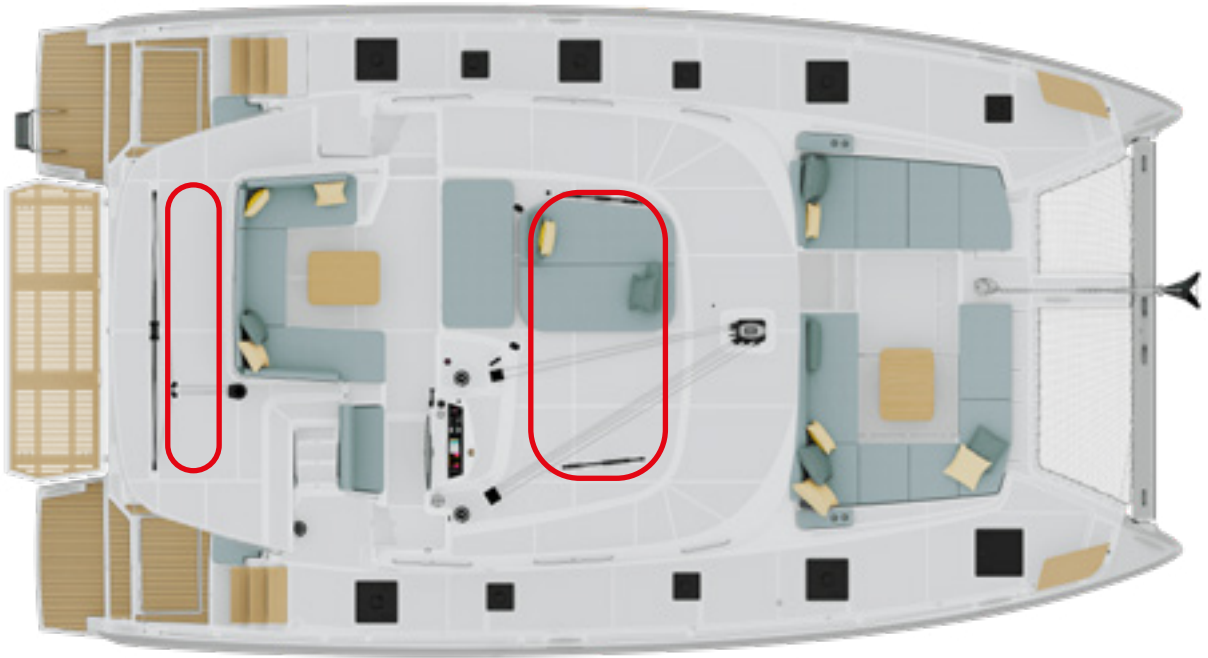


Brand & Reference: Mastervolt 2000KVA

Automatic selection when shore power is detected from the system.
Power switches automatically from the inverter to the shore power.

ROOF SOLAR PANELS

PRICE LIST REFERENCE: JP-0002-001



Picture soon to come

Brand: Marlec

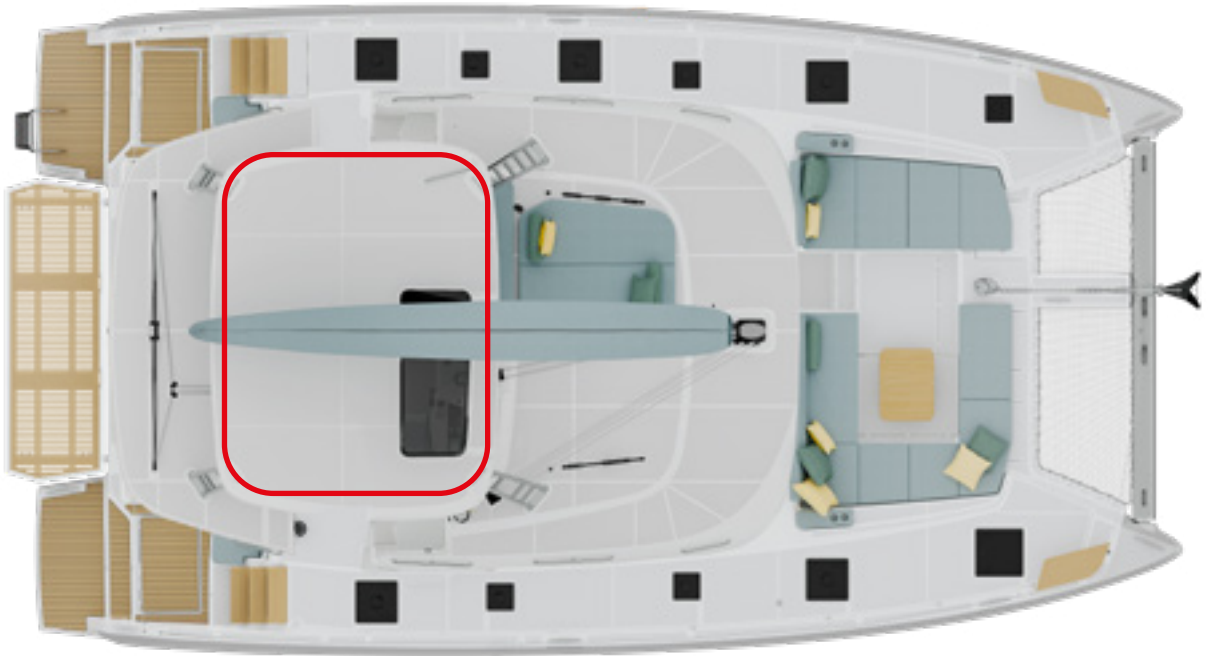
Quantity: 8

Rated output:

- 6 x 160W
- 2 x 140W
- Total : 1240W

HARD TOP SOLAR PANELS

PRICE LIST REFERENCE: JP-0001-001



Picture soon to come







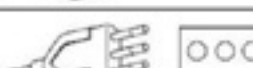
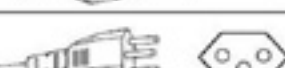

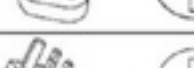
Brand: Marlec

Quantity: 9

Rated output: 140W - Total : 1260W

COMFORT OUTLET: MULTISTANDARD

PRICE LIST REFERENCE: FD-0002-003

Spine utilizzabili • Suitable plugs • Fiches compatibles • Verwendbare Stecker • Clavijas que se pueden utilizar • Φύς που μπορούν να χρησιμοποιηθούν	
Spina cinese 2P 10 A 250 V- • Chinese plug 2P 10 A 250 V- Fiche chinoise 2P 10 A 250 V- • Chinesischer Stecker 2P 10 A 250 V- Clavija china 2P 10 A 250 V- • Φύς Κίνας 2P 10 A 250 V-	
Spina svizzera 2P+T 10 A 250 V- • Swiss plug 2P+T 10 A 250 V- Fiche suisse 2P+T 10 A 250 V- • Schweizer Stecker 2P+T 10 A 250 V- Clavija suiza 2P+T 10 A 250 V- • Φύς Ελβετίας 2P+T 10 A 250 V-	
Spina cinese 2P 10 A 250 V- (tipo "Schuko") • Chinese plug 2P 10 A 250 V- ("Schuko" type) Fiche chinoise 2P 10 A 250 V- (type Schuko) • Chinesischer Stecker 2P 10 A 250 V- (Typ "Schuko") Clavija china 2P 10 A 250 V- (tipo "Schuko") • Φύς Κίνας 2P 10 A 250 V- (τύπου "σκούκο")	
Spina inglese 2P+T 5 A 250 V- • British plug 2P+T 5 A 250 V- Fiche anglaise 2P+T 5 A 250 V- • Englischer Stecker 2P+T 5 A 250 V- Clavija inglesa 2P+T 5 A 250 V- • Φύς Αγγλίας 2P+T 5 A 250 V-	
Spina europlug 2P 2,5 A 250 V- • Europlug 2P 2,5 A 250 V- Fiche europlug 2P 2,5 A 250 V- • Eurostecker 2P 2,5 A 250 V- Clavija europlug 2P 2,5 A 250 V- • Φύς europlug 2P 2,5 A 250 V-	
Spina italiana 2P 10 A 250 V- • Italian plug 2P 10A 250 V- Fiche italiana 2P 10 A 250 V- • Italienischer Stecker 2P 10 A 250 V- Clavija italiana 2P 10 A 250 V- • Φύς Ιταλίας 2P 10 A 250 V-	
Spina italiana 2P+T 10 A 250 V- • Italian plug 2P+T 10 A 250 V- Fiche italiana 2P+T 10 A 250 V- • Italienischer Stecker 2P+T 10 A 250 V- Clavija italiana 2P+T 10 A 250 V- • Φύς Ιταλίας 2P+T 10 A 250 V-	
Spina brasiliana 2P+T 10 A 250 V- • Brazilian plug 2P+T 10 A 250 V- Fiche brésilienne 2P+T 10 A 250 V- • Brasilianischer Stecker 2P+T 10 A 250 V- Clavija brasileira 2P+T 10 A 250 V- • Φύς Βραζιλίας 2P+T 10 A 250 V-	
Spina cinese 2P+T 10 A 250 V- • Chinese plug 2P+T 10 A 250 V- • Fiche chinoise 2P+T 10 A 250 V- Chinesischer Stecker 2P+T 10 A 250 V- • Clavija china 2P+T 10 A 250 V- • Φύς Κίνας 2P+T 10 A 250 V- Spina australiana 2P+T 10 A 250 V- • Australian plug 2P+T 10 A 250 V- • Fiche australienne 2P+T 10 A 250 V- Stecker nach australischem Standard 2P+T 10 A 250 V- • Clavija australiana 2P+T 10 A 250 V- • Φύς Αυστραλίας 2P+T 10 A 250 V-	
Spina inglese 2P+T 13 A 250 V- • British plug 2P+T 13 A 250 V- Fiche anglaise 2P+T 13 A 250 V- • Englischer Stecker 2P+T 13 A 250 V- Clavija inglesa 2P+T 13 A 250 V- • Φύς Αγγλίας 2P+T 13 A 250 V-	

The "MULTISTANDARD SOCKET" option is incompatible with 110V.
Please keep the "SPECS US" line if necessary.

AIR CONDITIONING

PRICE LIST REFERENCE: CC-0001-001

Seawater-cooled AC unit: Heat is transferred from the cabin air to the refrigerant gas to the seawater. Reverse cycle on heating mode.

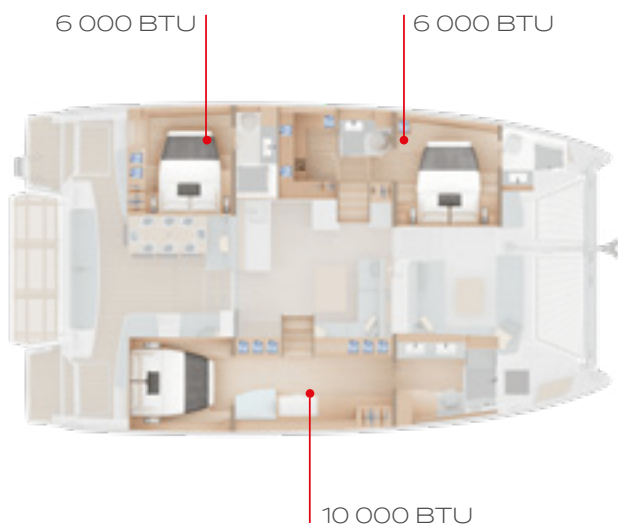
1 control device per hull
1 control device in the salon

Electrical specification:

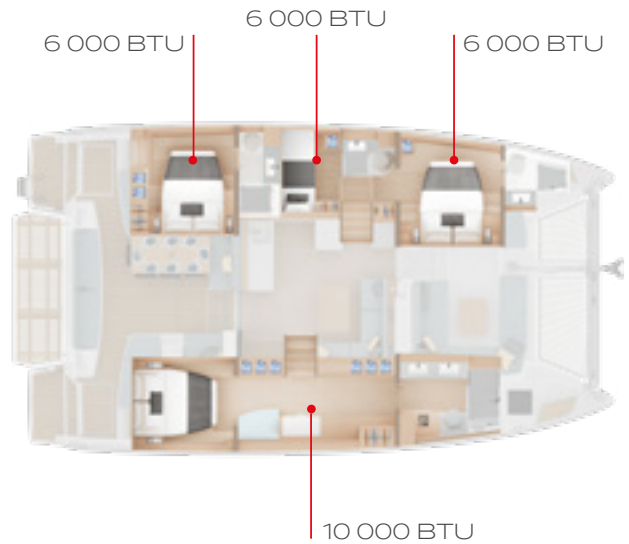
220V : 1 x 32A shore power
In addition to 1 x 32A shore power



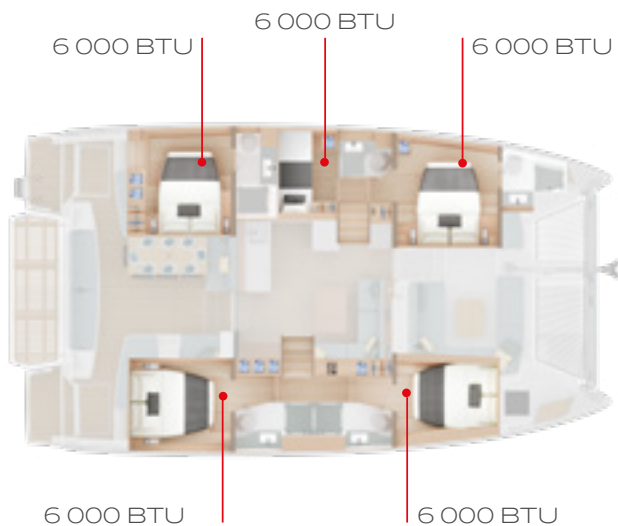
LOCATION ON BOARD



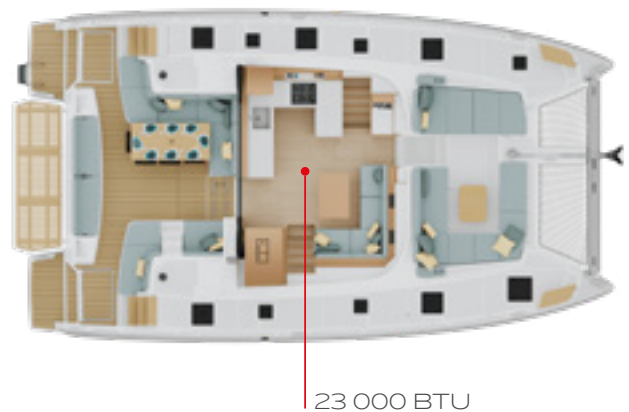
3-cabin version I Utility room



3-cabin version I Bunk beds



5-cabin version



Salon



09

Water circuit

Watermaker: 100L/H (ED-0001-004)

Watermaker: 200L/H (ED-0001-008)

Sea water electrical pump (ED-0003-001)

Waterheater: upgrade (ED-0004-002)

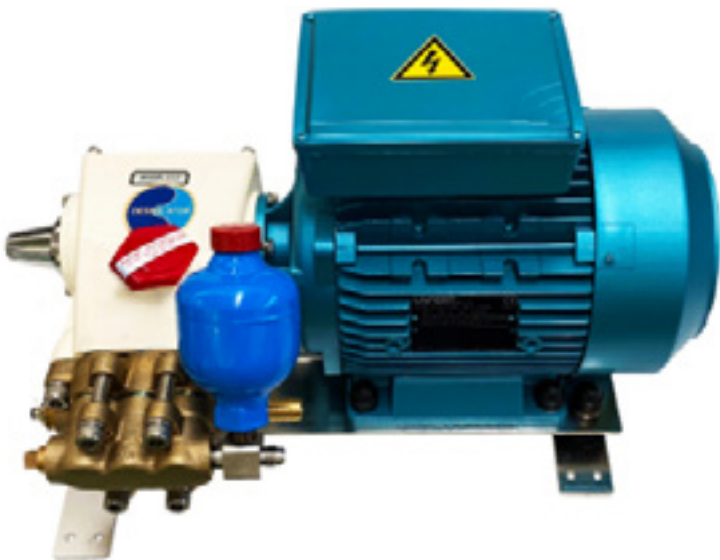
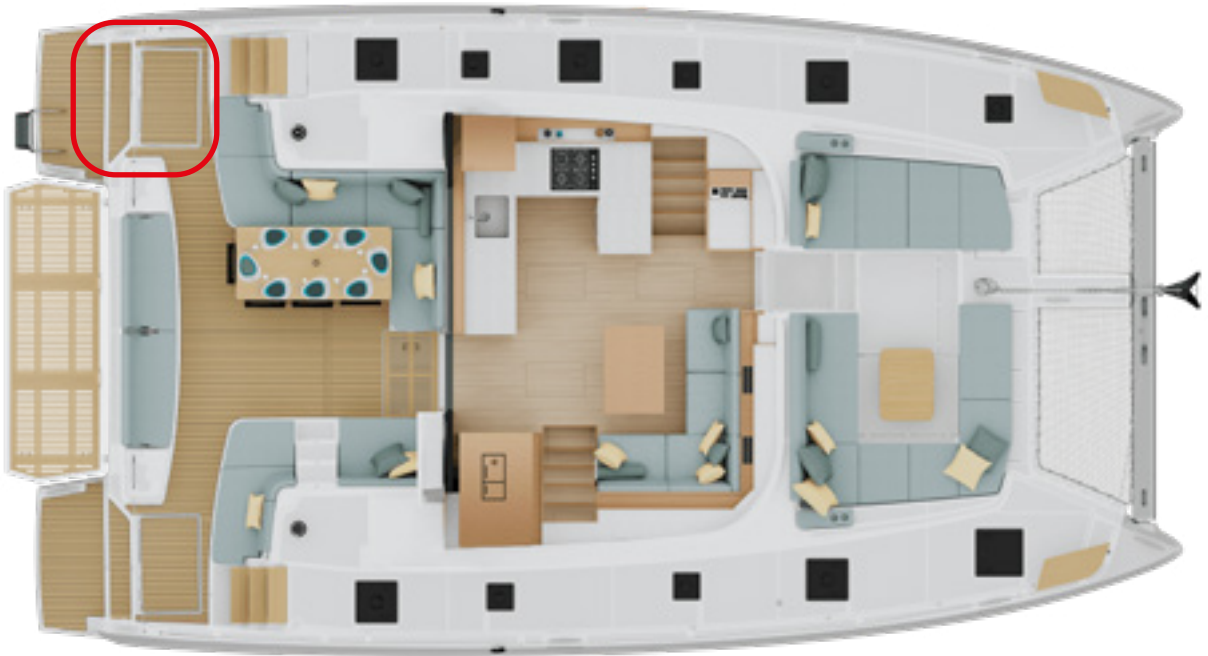
WATERMAKER: 100LH

PRICE LIST REFERENCE: ED-0001-004



WATERMAKER: 200LH

PRICE LIST REFERENCE: ED-0001-008



200L/H watermaker

Brand: Dessalator

Reference: PRO 200 Compact Classic

JG-0001-105 | JG-0001-058 "GENSET: MASE" or JG-0001-030 | JG-0001-090 "GENSET ONAN" option compulsory.

SEA WATER ELECTRICAL PUMP

PRICE LIST REFERENCE: ED-0003-001



Sea water tap

Sea water pump starter

Picture onboard Lagoon 46

WATER HEATER: UPGRADE

PRICE LIST REFERENCE: ED-0004-002

Brand & Reference: Quick

Capacity: 100L

This option comes in replacement of the 60L standard water heater.

LOCATION ON BOARD



3-cabin version



5-cabin version



10

Interior equipments

INTERIOR EQUIPMENT

Additional stool (II-0008-001)

Convertible salon table (II-0007-005)

Salon berth (II-0044-001)

Cabins slatted frame (II-0009-001)

Salon curtains (ID-0007-001)

Cabins roller blinds (ID-0013-002)

Fans in salon and cabins (CC-0007-001)

HOUSEHOLD APPLIANCES

Salon fridge upgrade (CL-0019-002)

Oven: upgrade (CL-0027-003)

Hotplate: upgrade (CL-0047-003)

Dishwasher (CL-0008-001)

Washer dryer (CL-0005-001)

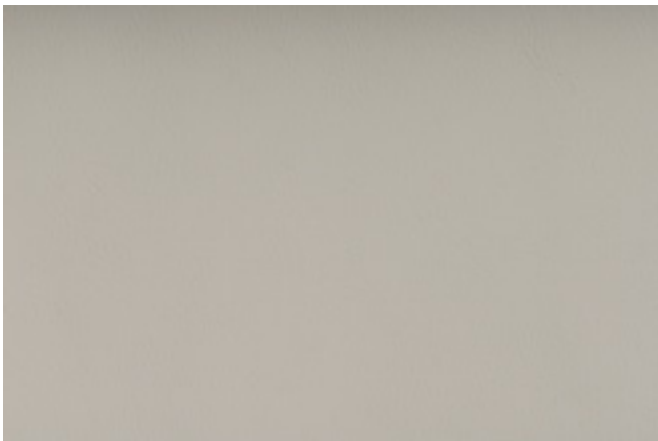
Salon microwave oven (CL-0028-002)

ADDITIONAL STOOL

PRICE LIST REFERENCE: II-0008-001



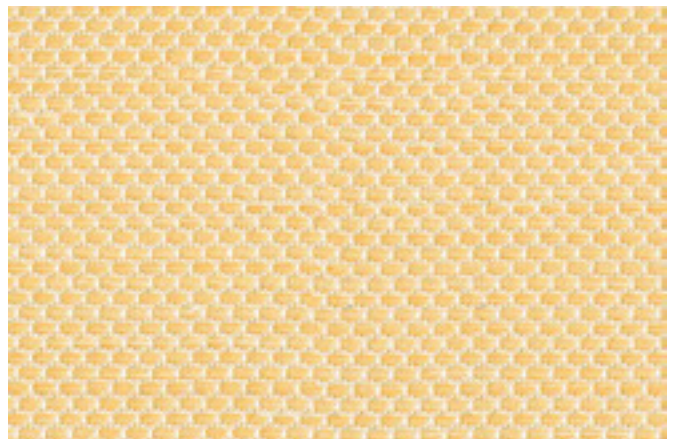
Non contractual picture



SPRADLING - MARLIN BRILLANT WHITE



PANAREA AMBIANCE
CREVIN - LIBRA 49



SORRENTO AMBIANCE
SUNBRELLA - WADI RIVIERA J628 140

CONVERTIBLE SALON TABLE

PRICE LIST REFERENCE: II-0007-005

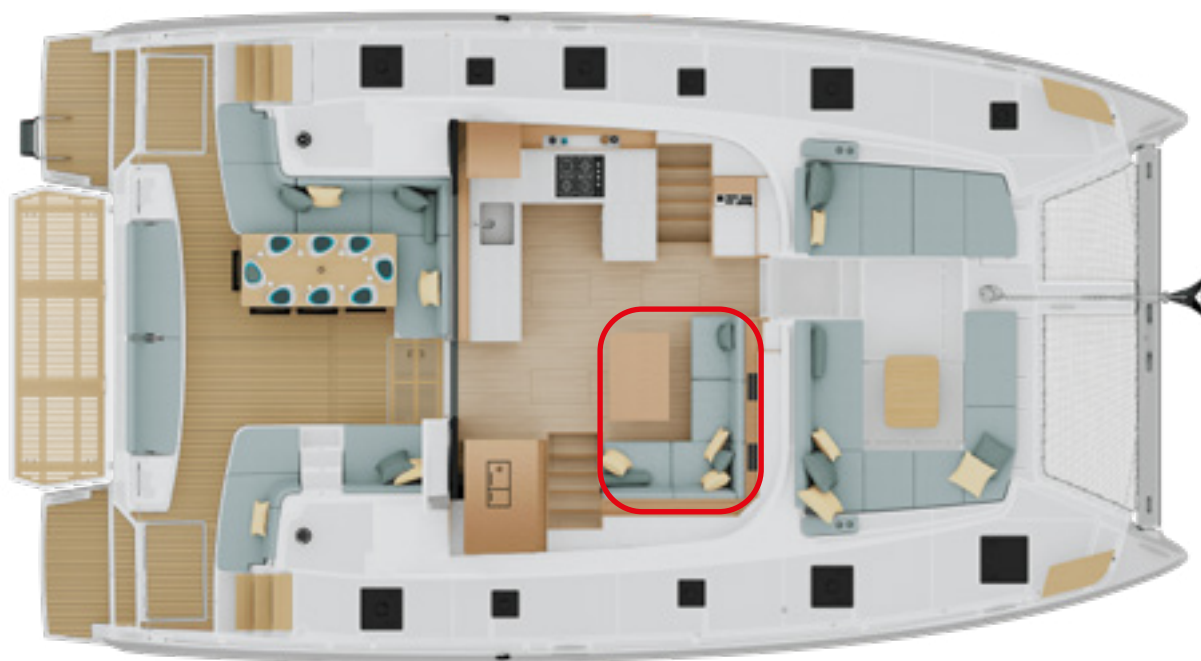


Non contractual pictures

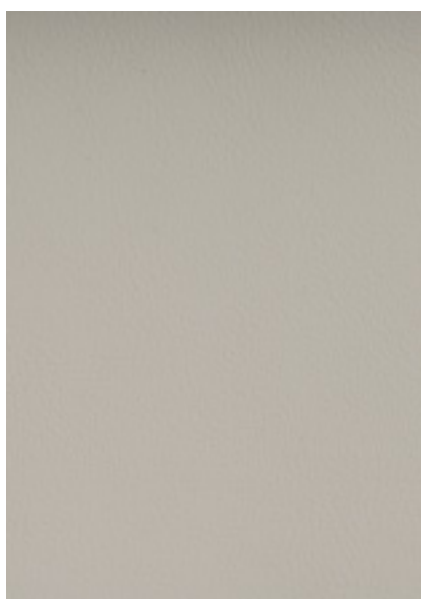
Convertible salon table with telescopic legs.
Option compatible with the additional berth in salon option.

SALON BERTH

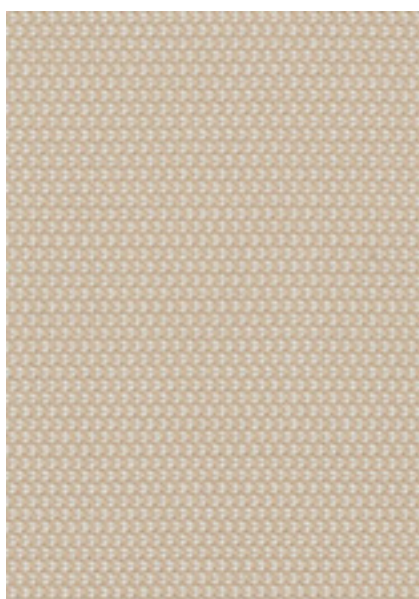
PRICE LIST REFERENCE: II-0044-001



Berth upholstery according to the interior upholstery selected.



SPRADLING - MARLIN BRILLANT WHITE



PANAREA AMBIANCE
SUNBRELLA - LOPI ANTIQUE
LOP R034 140



SORRENTO AMBIANCE
CREVIN - NOAH 33

CABINS SLATTED FRAME

PRICE LIST REFERENCE: II-0009-001



View on Lagoon 46

Available for the 3-cabin and 5-cabin versions.

Slats are in one part, full width of the bed.

SALON CURTAINS

PRICE LIST REFERENCE: ID-0007-001



Reference: BRU - Stonewall 05 Swan

CABIN ROLLER BLINDS

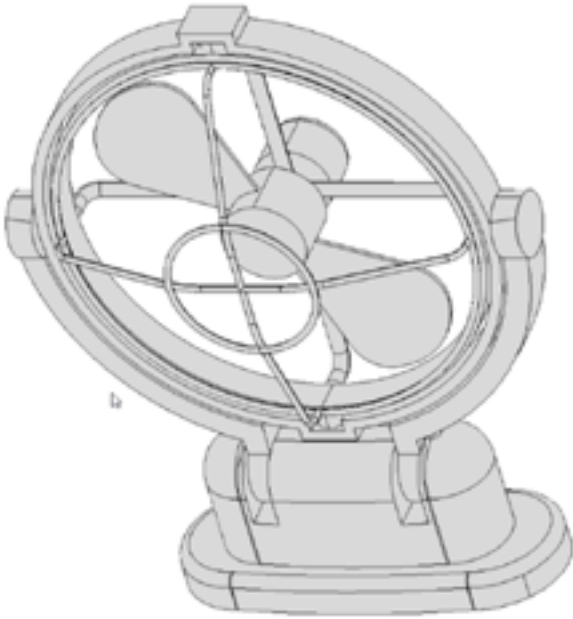
PRICE LIST REFERENCE: ID-0013-002



Non contractual pictures - Onboard Lagoon 43

FANS IN SALON AND CABINS

PRICE LIST REFERENCE: CC-0007-001



SIROCCO II

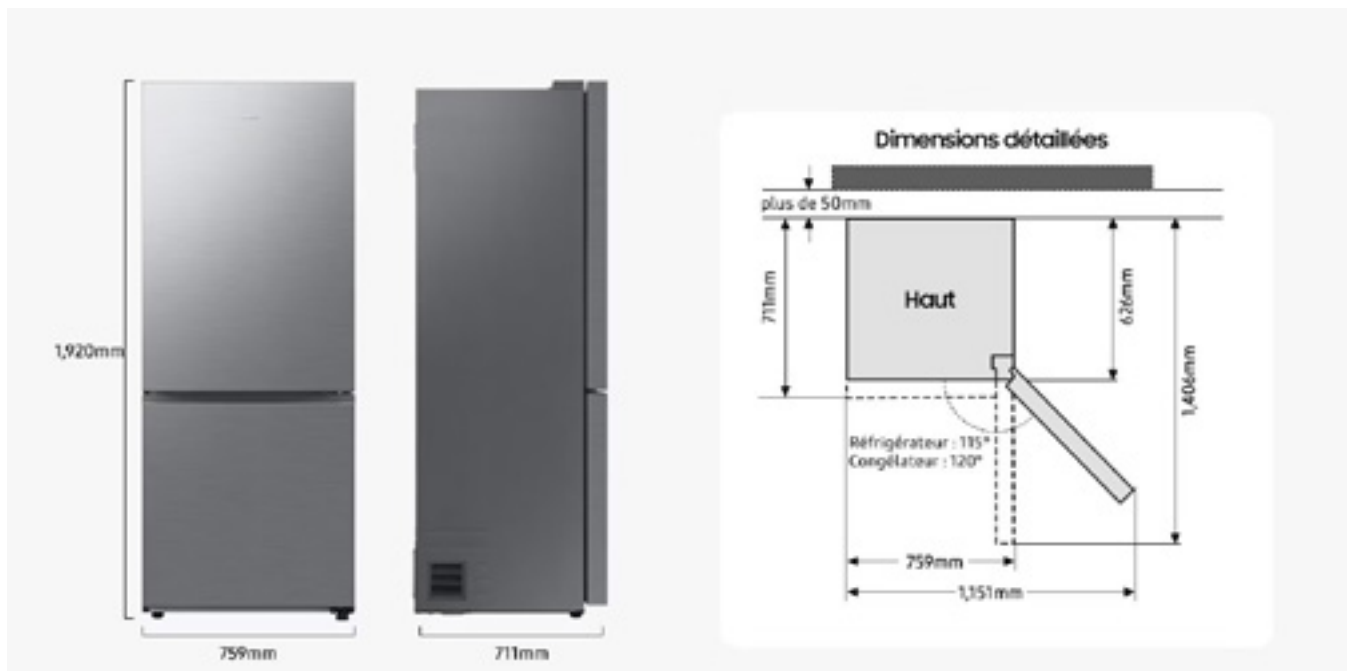
Brand & Reference: Caframo - SIROCCO II

360° airflow

Details soon to come

SALON FRIDGE UPGRADE

PRICE LIST REFERENCE: CL-0019-002



Standard: 300 L

Option: Samsung 508 L | 18 cu.ft (in replacement of the standard 300 L fridge)

Specifications: Width 759 / Height 1920 / Depth 711mm

Capacity:

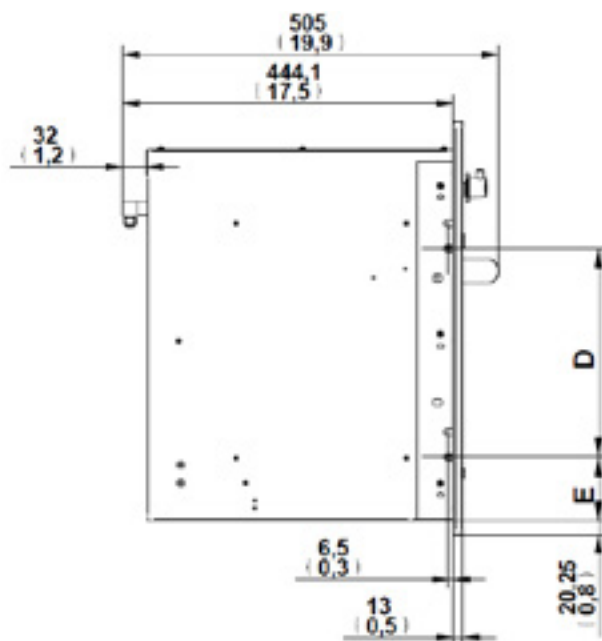
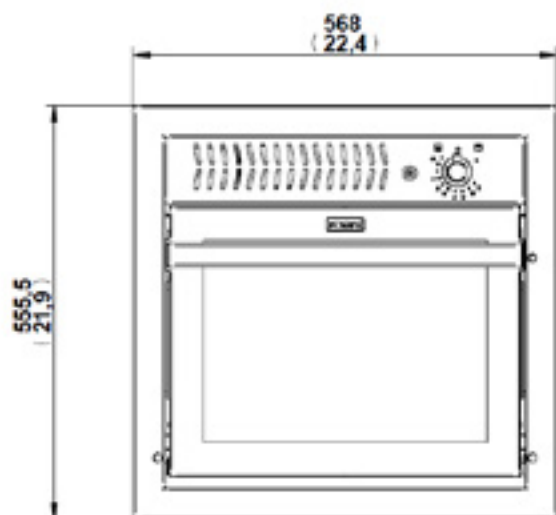
- Fridge: 340 L
- Freezer : 168L

OVEN: UPGRADE

PRICE LIST REFERENCE: CL-0027-003



Picture onboard Lagoon 46

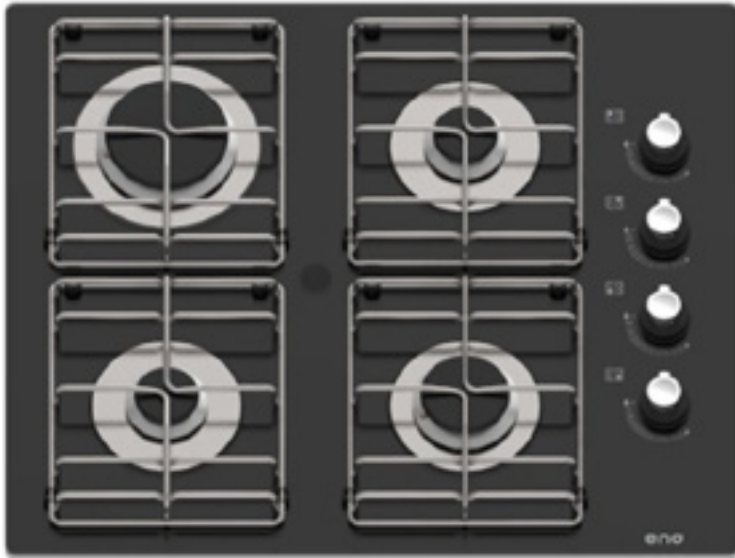


Replaces standard gas oven

Brand: ENO Marine

HOTPLATE: UPGRADE

PRICE LIST REFERENCE: CL-0047-003

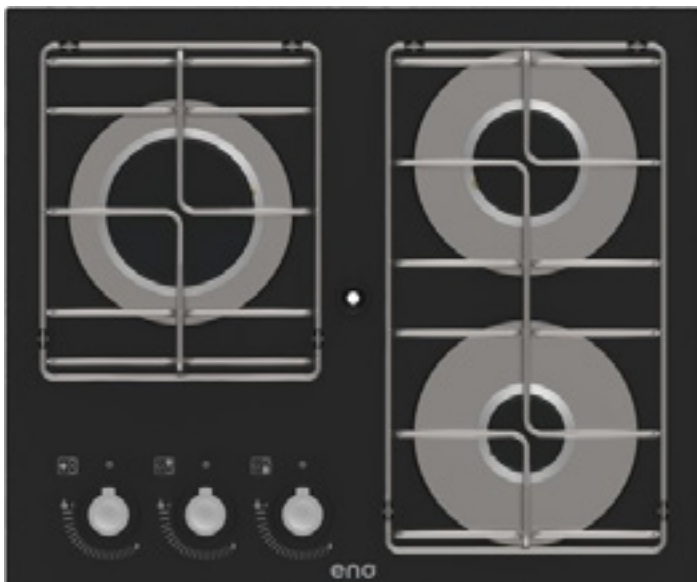


Optional 4 burners cooking table

Brand: ENO Marine

Range: XL

The option comes in replacement of the standard 3 burners cooking table:



Standard 3 burners cooking table

Brand: ENO Marine

DISHWASHER

PRICE LIST REFERENCE: CL-0008-001



Brand: WHIRLPOOL

Reference: WKCIO3T133PFE

Specifications: 12 person

WASHER DRYER

PRICE LIST REFERENCE: CL-0005-001



3-cabin version - Utility Room
 Located in the Utility Room



3-cabin version - Bunk Beds
 Located in the owner's head



5-cabin version
 Located in port hull

Brand & reference: CANDY / CSWS 485TWMRE-47

- Specifications:
- Washer / Dryer
 - 8 Kg

MICROWAVE

PRICE LIST REFERENCE: CL-0028-002



Brand: WHIRLPOOL

Reference: WMD604TXF

Specifications: 31L



11

HIFI, Video & Electronics

HIFI & VIDEO

Salon video: TV prefitting (HA-0010-004)

Owner cabin video: TV prefitting (HA-0039-002)

Speaker upgrade (HA-0013-002)

ELECTRONICS

Sounder: Raymarine Realvision 3D (NI-0007-002)

Automatic pilot remote: Raymarine Smart Control (NI-0009-002)

Additional VHF handset: Raymarine RAY90 (NI-0018-002)

Aft camera: Raymarine (NI-0014-002)

Radar: Raymarine Quantum 2 (NI-0004-003)

TV antenna (HC-0001-001)

SALON VIDEO: TV PREFITTING

PRICE LIST REFERENCE: HA-0010-004



Non contractual pictures

TV mount with a rail for adjusting the position

OWNER CABIN VIDEO: TV PREFITTING

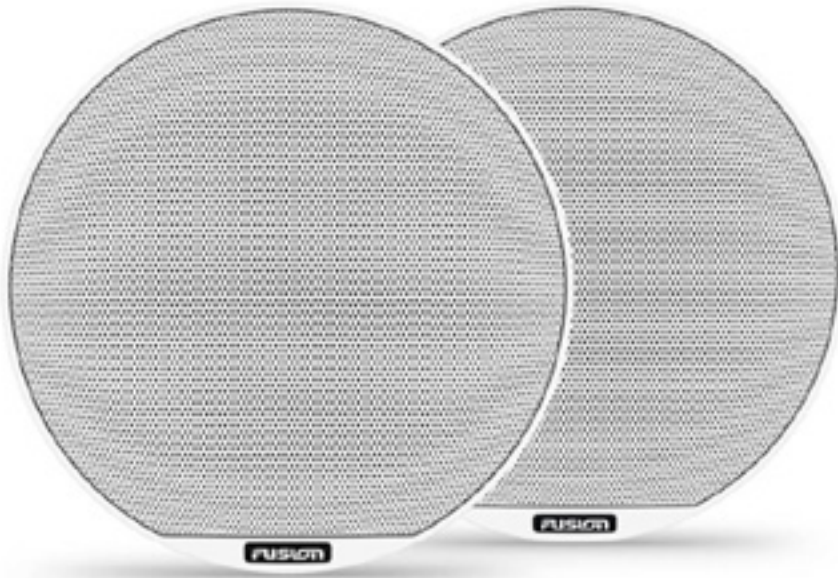
PRICE LIST REFERENCE: HA-0039-002



Non contractual pictures

SPEAKER UPGRADE

PRICE LIST REFERENCE: HA-0013-002



Fusion Signature loudspeakers

Come in replacement of the loudspeakers integrated in the Ready to Sail Equipment.

Supplier reference: 010-02771-00

SOUNDER: RAYMARINE REALVISION 3D

PRICE LIST REFERENCE: NI-0007-002



- The RV-200 features a rugged cast-bronze through hull body suitable for fiberglass or wooden hulls.
- The RV-200 is a 4-channel, Wide Spectrum CHIRP transducer with DownVision™, SideVision™, high frequency CHIRP fish targeting and RealVision 3D™ sonar inside.
- The transducer has a built-in attitude and heading reference system (AHRS) that stabilizes the sonar imagery, automatically compensating for vessel motion.
- Crystal-clear imagery in waves, swells, and while maneuvering.
- The RV-200 also has a built-in fast response water temperature sensor for quick, accurate readings

AUTOMATIC PILOT REMOTE: RAYMARINE SMART CONTROL

PRICE LIST REFERENCE: NI-0009-002



Raymarine S100 Remote Control

- Easy operation and intuitive menu structure for easy access to all features.
- The Raymarine S100 wireless control is powered by two AAA alkaline batteries

ADDITIONAL VHF HANDSET: RAYMARINE RAY90

PRICE LIST REFERENCE: NI-0018-002



AFT CAMERA: RAYMARINE

PRICE LIST REFERENCE: NI-0014-002



Brand: Raymarine

Camera control device at chart table

- Quick installation and all-round operation
- Ruggedised, High Definition, Day and Night network dome video camera suitable for below deck applications
- Plug and play integration with Raymarine MFDs running Lighthouse II
- Power over Ethernet (PoE) or direct 12v DC power supply
- Simple mechanical frame allows the camera to be locked, rock steady, into position
- High bright IR LEDs for operation in total darkness



RADAR: RAYMARINE QUANTUM 2

PRICE LIST REFERENCE: NI-0004-003



Picture onboard Lagoon 51



Key features:

- Doppler moving target display allows for superior situational awareness at-a-glance
- Fully automatic MARPA target tracking, along with manual MARPA mode
- Adjustable TrueTrails target history shows the motion history of moving contacts
- CHIRP Pulse Compression detects contacts as close as 18-feet for zero-visibility navigation
- 24-mile range for early detection of traffic, navigation aids, landfall and weather
- Immediate awareness - Quantum starts up and is ready to go in seconds
- Superior interference rejection eliminates noise from other radars
- Simplified installation with Wi-Fi or thin wire network connectivity
- Easy upgrade - Quantum 2 fits the same bolt pattern as other Raymarine scanners
- Lightweight and easy to install - Quantum weighs up to 50% less than comparable magnetron radars
- Safe emissions - mount Quantum anywhere onboard
- Low power consumption for extended battery life under sail

TV ANTENNA

PRICE LIST REFERENCE: HC-0001-001

Includes:

- TV antenna (top of the mast)
- TV antenna amplifier (in the salon ceiling)
- TV cable pre-installed in roof to link amplifier and antenna



12

Mooring & anchoring

Mooring kit (BA-0006-001)

Anchoring kit (BA-0002-001)

Windlass remote control at helm station with chain counter
(BA-0004-001)

MOORING KIT

PRICE LIST REFERENCE: BA-0006-001

Includes:

- Fenders: Quantity 6 | 860 mm - Ø230 mm | 2'1" - Ø9"
- Mooring rope lines: Quantity 4 | 20 m - Ø22 mm | 65'7" - Ø7/8

ANCHORING KIT

PRICE LIST REFERENCE: BA-0002-001

Includes:

- Anchor: Delta 32 kg | 71 lbs
- Chain: 75 m - Ø12 mm | 246'1" - Ø1/2"
- Mooring cable: Ø22 mm | Ø7/8"

WINDLASS REMOTE CONTROL

PRICE LIST REFERENCE: BA-0004-001

Remote control and chain counter at helm station.

Completes standard remote control located in the forward storage compartments.

LOCATION ON BOARD

